

**REDE DE VISITAÇÃO FLORAL *VERSUS* REDE DE TRANSPORTE DE PÓLEN ENTRE  
ABELHAS E PLANTAS NA FLORESTA ATLÂNTICA DO SUL DO BRASIL**

*Caroline Ribeiro<sup>1\*</sup>, Jana Magaly Tesserolli de Souza<sup>2</sup> & Isabela Galarda Varassin<sup>3</sup>*

<sup>1</sup> Universidade Tecnológica Federal do Paraná, Programa de Pós-Graduação em Ciência e Tecnologia Ambiental, Rua Deputado Heitor Alencar Furtado, 5000, CEP 81280-340, Curitiba, PR, Brasil.

<sup>2</sup> Universidade Tecnológica Federal do Paraná, Departamento Acadêmico de Química e Biologia, Rua Deputado Heitor Alencar Furtado, 5000, CEP 81280-340, Curitiba, PR, Brasil.

<sup>3</sup> Universidade Federal do Paraná, Departamento de Botânica, Programa de Pós-Graduação em Ecologia e Conservação, Laboratório de Interações e Biologia Reprodutiva, Avenida Coronel Francisco Heráclito dos Santos, 100, Jardim das Américas, CEP 81530-000, Curitiba, PR, Brasil.

E-mails: crmeistradoeco@gmail.com (\*autor correspondente); janamagaly@yahoo.com.br; isagalarda@gmail.com

**MATERIAL SUPLEMENTAR 5.** Catálogo de pólen da Mata Atlântica - Espécies que ocorrem nas áreas de restauração da SPVS, no município de Antonina, Paraná, Brasil.

ÍNDICE (Clique sobre a espécie para acesso aos dados polínicos)

**Acanthaceae**

[Hygrophila sp. 1](#)

[Hygrophila sp. 2](#)

**Asteraceae**

[Adenostemma brasilianum](#)

[Baccharis singularis](#)

[Cyrtocymura scorpioides](#)

[Heterocondylus alatus](#)

[Mikania micrantha](#)

[Vernonanthura beirichii](#)

[Vernonanthura puberula](#)

**Begoniaceae**

[Begonia fischeri](#)

**Bignoniaceae**

[Jacaranda puberula](#)

**Boraginaceae**

[Varronia polycephala](#)

**Commelinaceae**

[Commelina diffusa](#)

[Tripogandra diuretica](#)

**Fabaceae**

[Desmodium adscendens](#)

[Desmodium affine](#)

[Desmodium incanum](#)

[Inga edulis](#)

[Inga marginata](#)

[Senna multijuga](#)

**Lamiaceae**

[Hyptis lappulacea](#)

**Lobeliaceae**

[Lobelia sp.](#)

**Malvaceae**

[Sida planicaulis](#)

[Sida rhombifolia](#)

**Melastomateaceae**

[Chaetogastra clinopodifolia](#)

[Clidemia hirta](#)

[Leandra reversa](#)

[Miconia cinerascens](#)

[Miconia latecrenata](#)

[Pleroma caissara](#)

[Pleroma trichopoda](#)

[Pterolepis glomerata](#)

[Tibouchina clavata](#)

[Tibouchina pulchra](#)

**Myrtaceae**

[Psidium guajava](#)

**Plantaginaceae**

[Achetaria ocymoides](#)

[Conobea scoparioides](#)

**Rosaceae**

[Rubus rosaefolius](#)

**Rubiaceae**

[Dioidia saponariifolia](#)

[Spermacoce ocymifolia](#)

**Salicaceae**

[Casearia sylvestris](#)

**Solanaceae**

[Acnistus arborescens](#)

[Solanum paniculatum](#)

[Solanum pseudoquina](#)

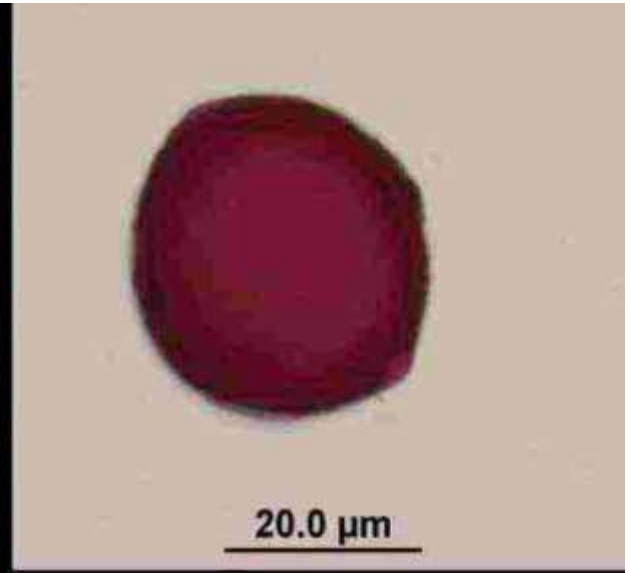
[Solanum rufescens](#)

**Verbenaceae**

[Stachytarpheta maximiliani](#)

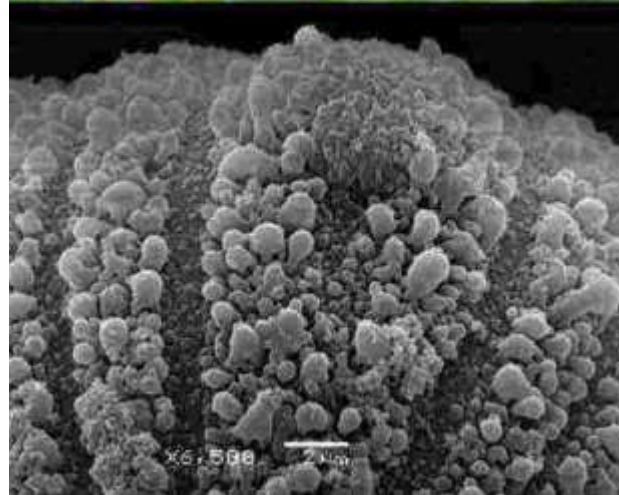
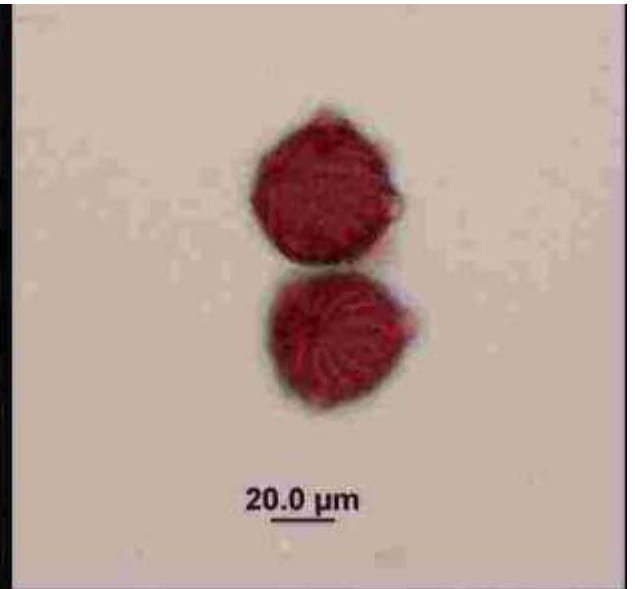
# *Hygrophyla* sp. 1

Acanthaceae



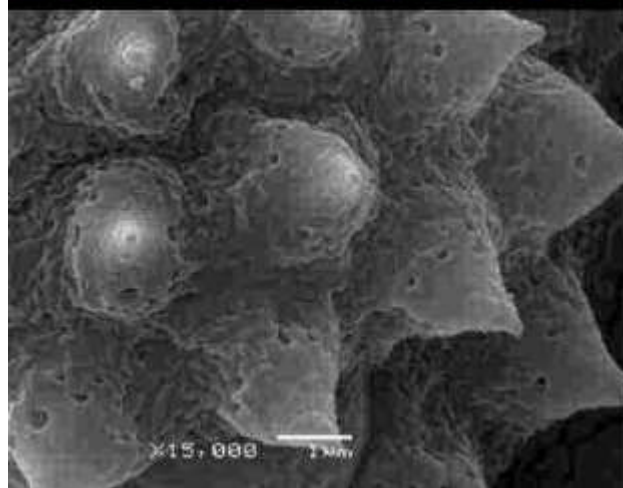
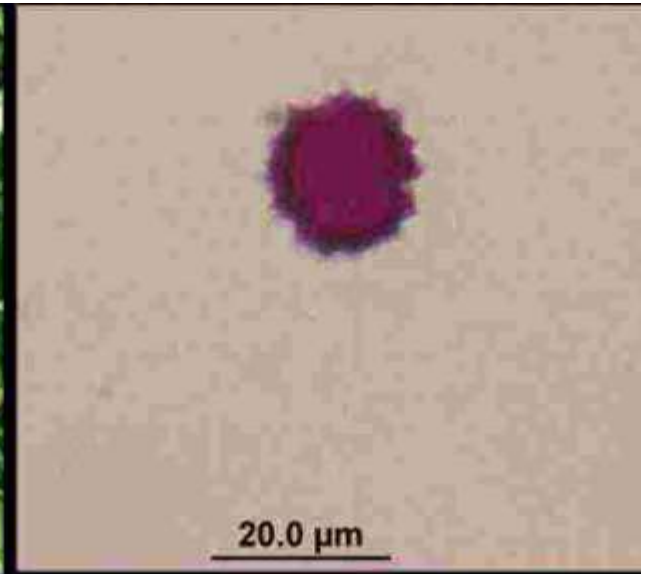
# *Hygrophyla* sp. 2

Acanthaceae



# *Adenostemma brasilianum*

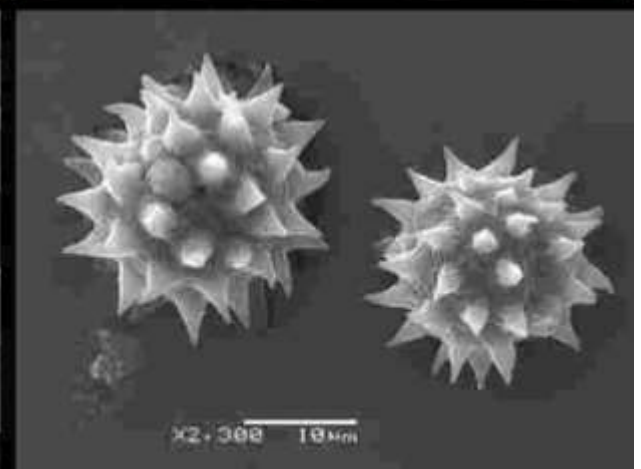
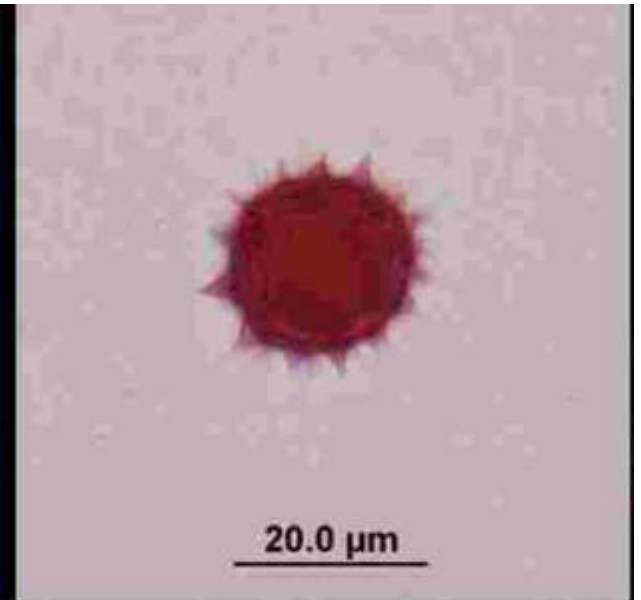
Asteraceae





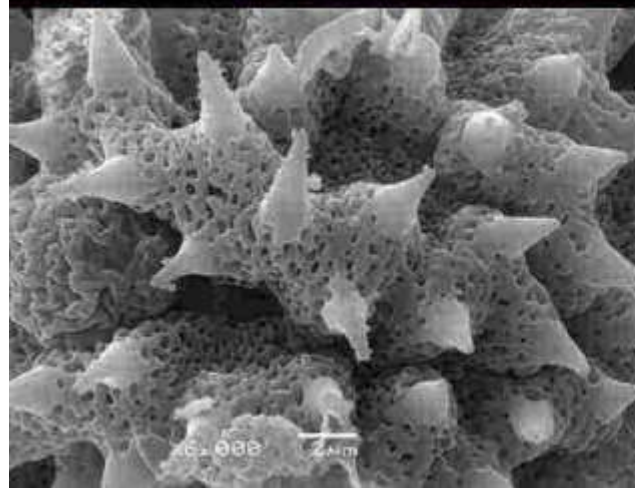
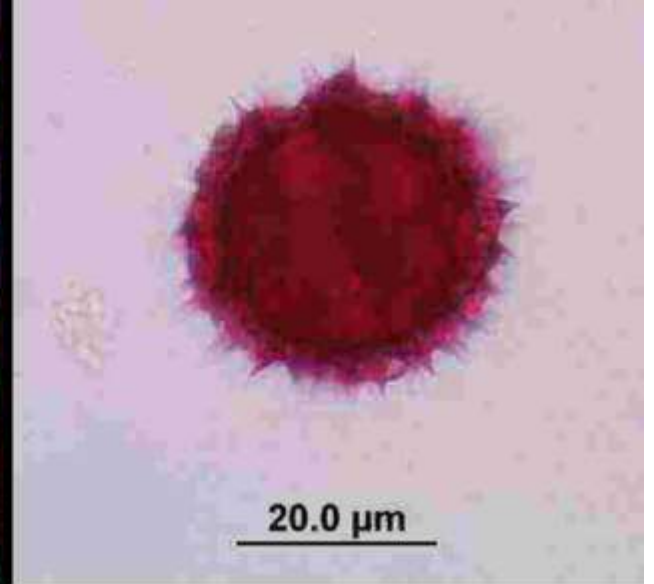
# *Baccharis singularis*

Asteraceae



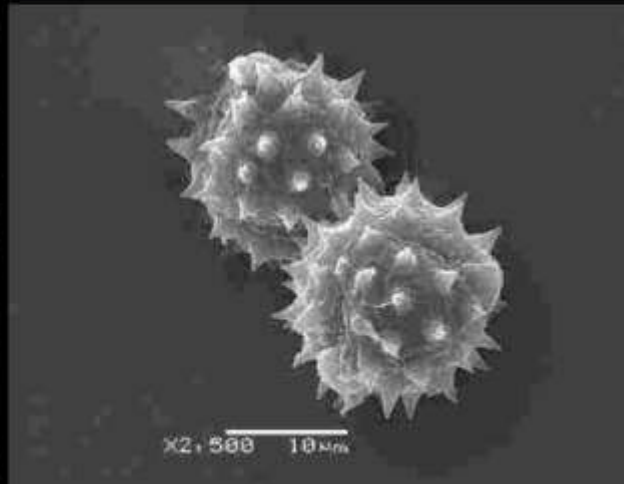
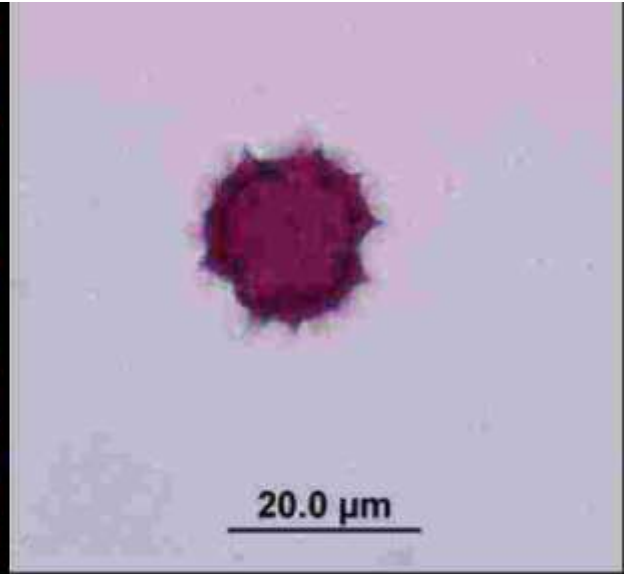
# *Cyrtocymura scorpioides*

Asteraceae



*Heteroncondylus  
alatus*

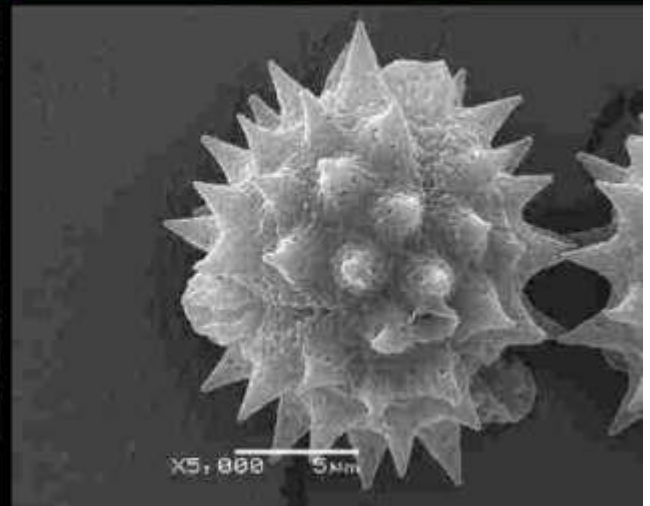
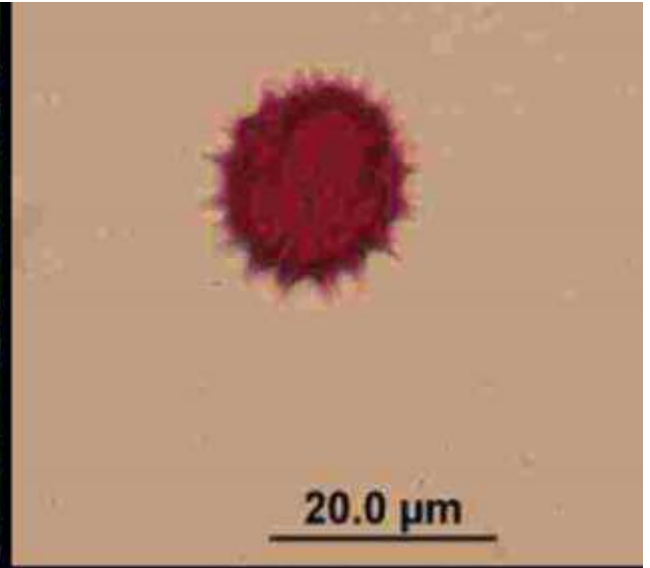
Asteraceae





# *Mikania micrantha*

Asteraceae

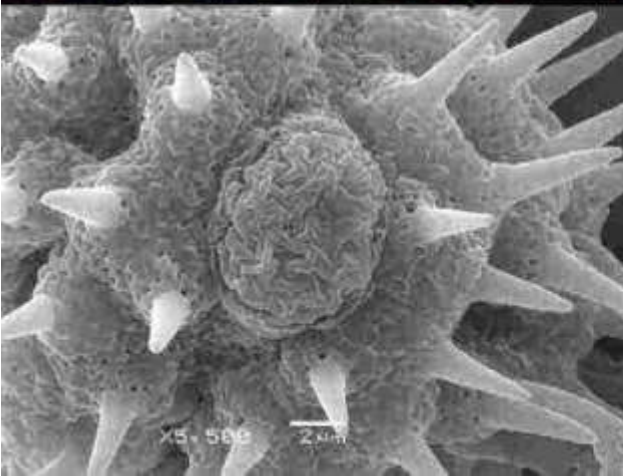
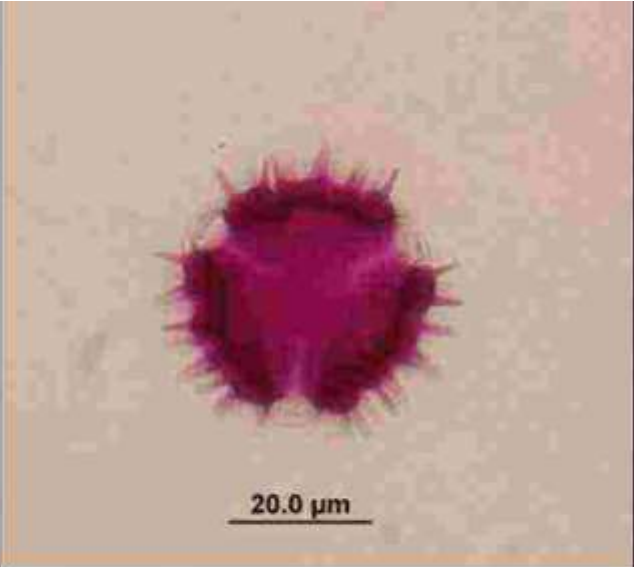


*Vernonhantura  
beirichii*

Asteraceae

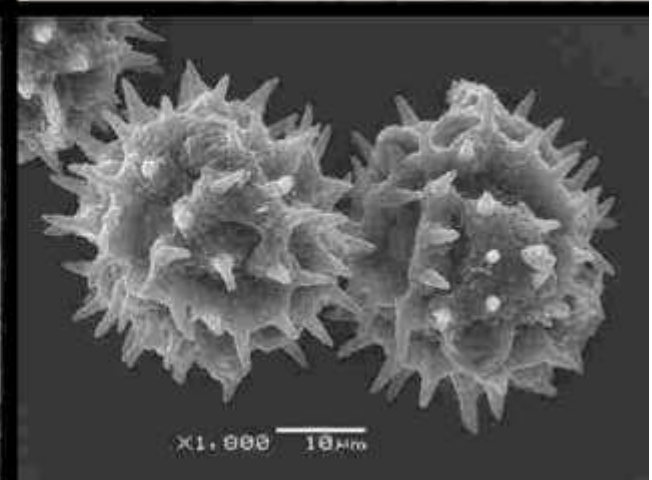
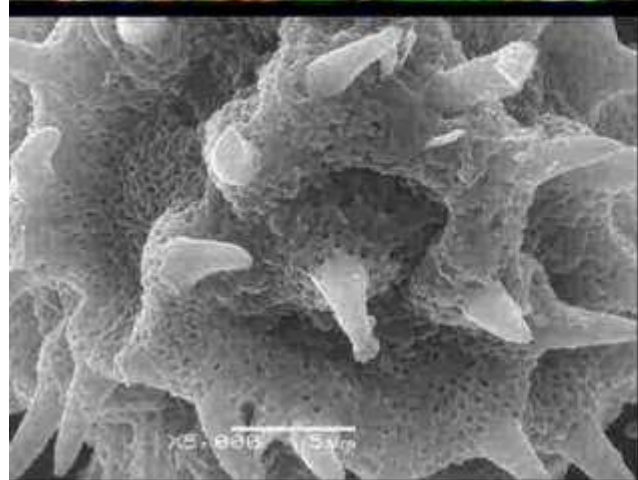
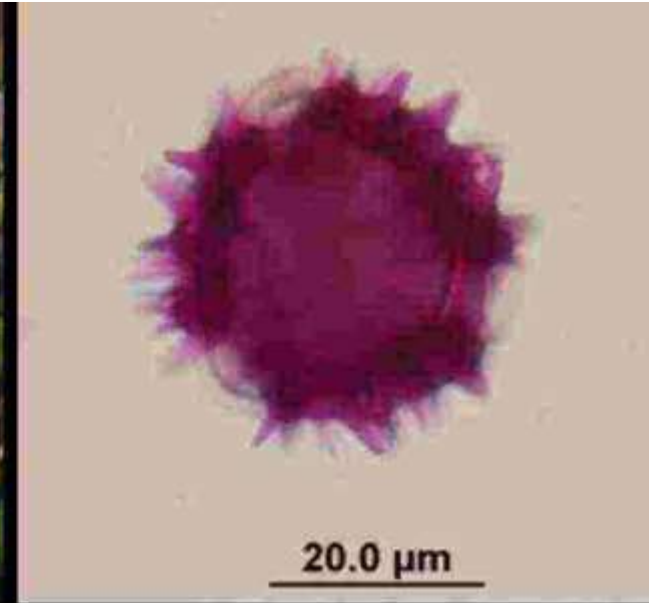


Foto: J. M. T. de Souza



*Vernonhantura  
puberula*

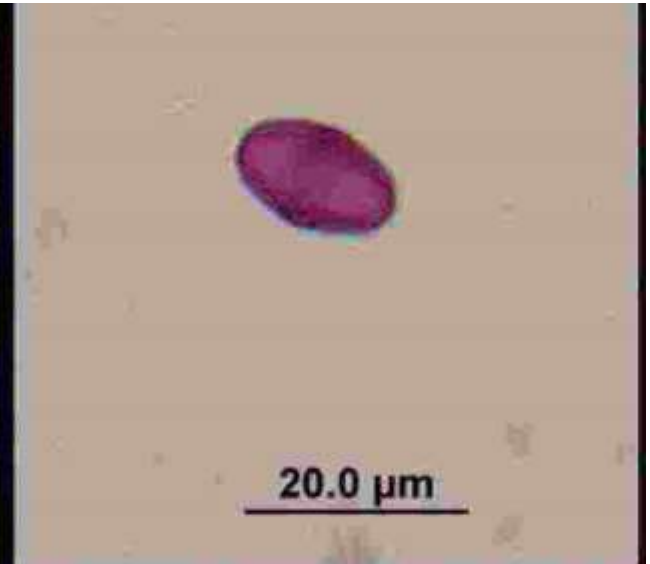
Asteraceae





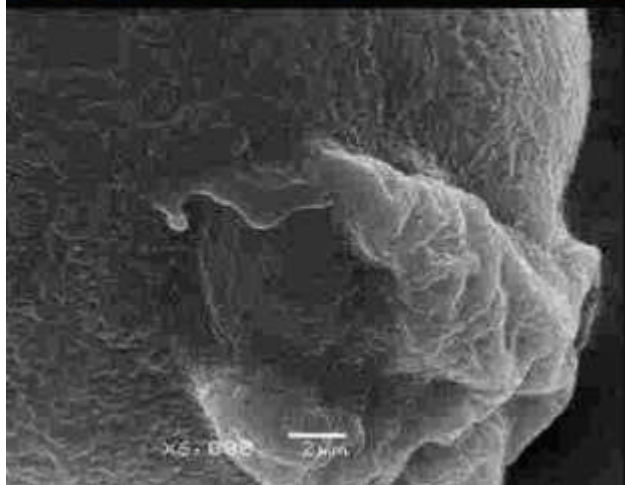
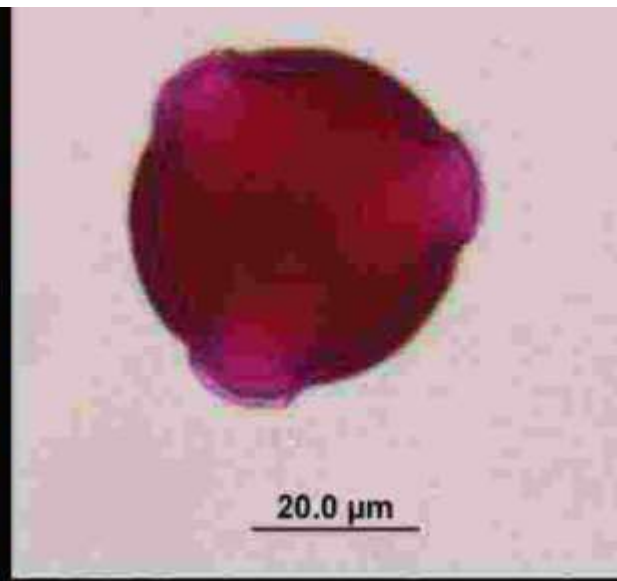
# *Begonia fischeri*

Begoniaceae



# *Jacaranda puberula*

Bignoniaceae



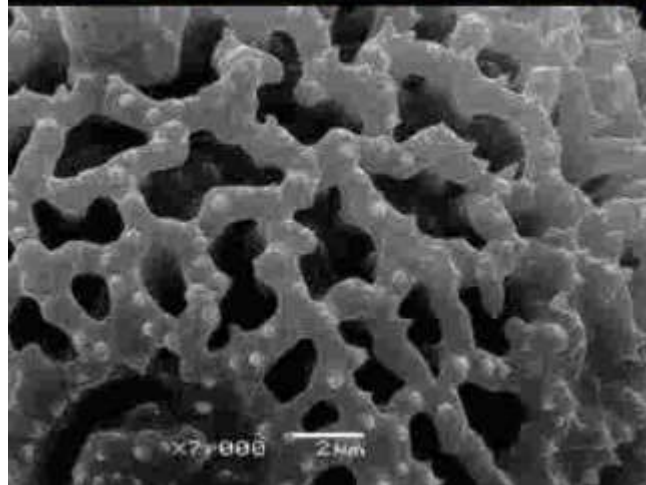
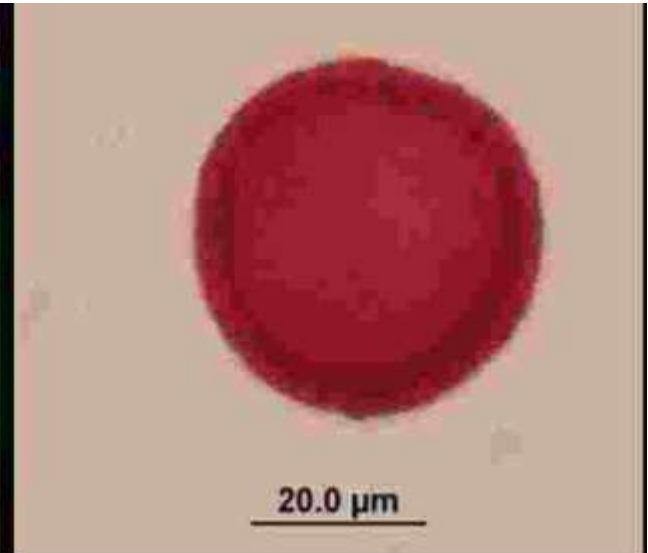


# *Varronia polycephala*

Boraginaceae

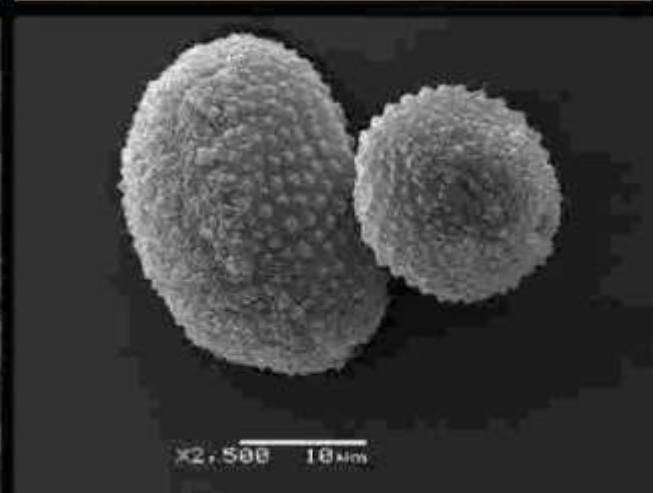
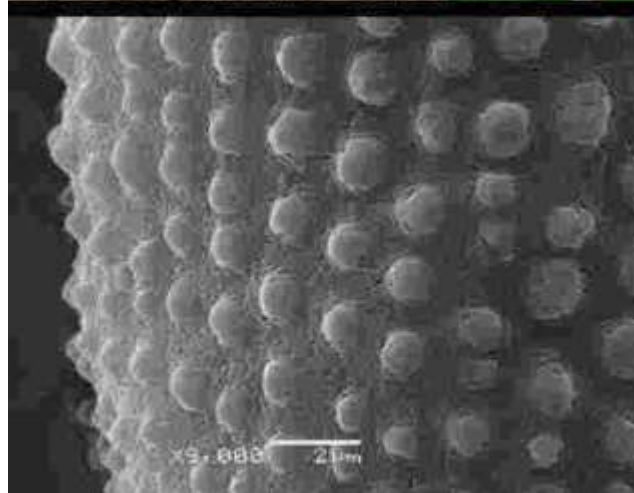
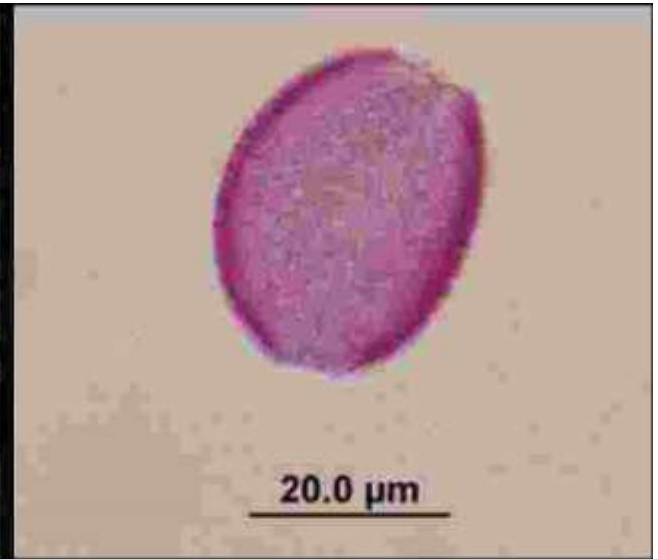


Foto: J. M. T. de Souza



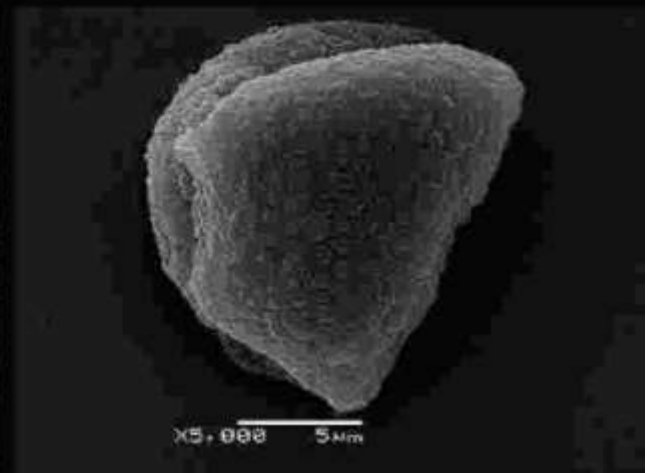
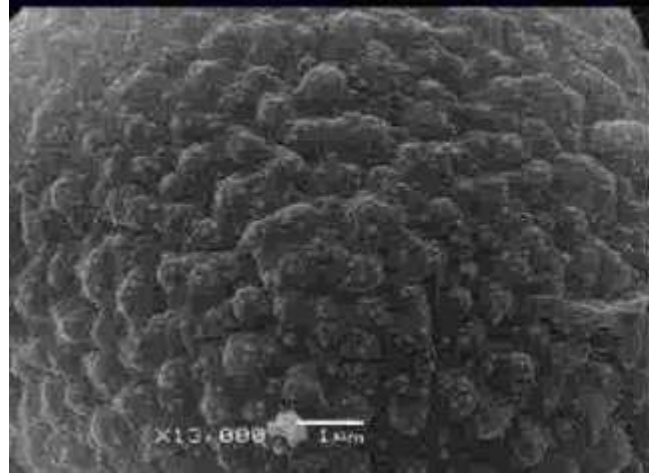
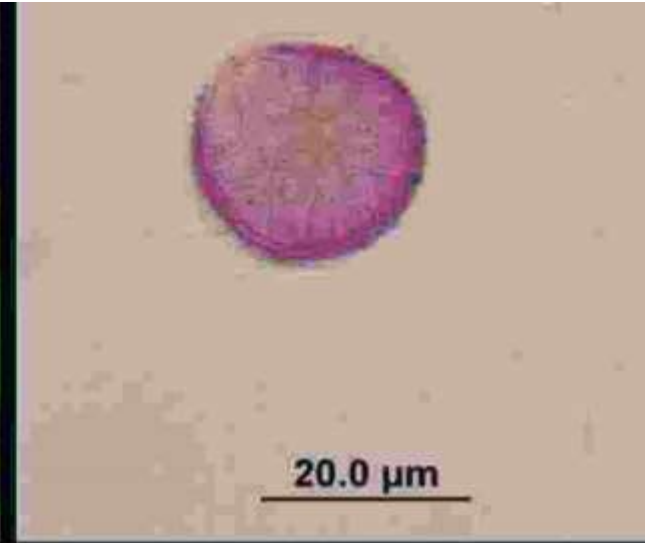
# *Commelina diffusa*

Commelinaceae



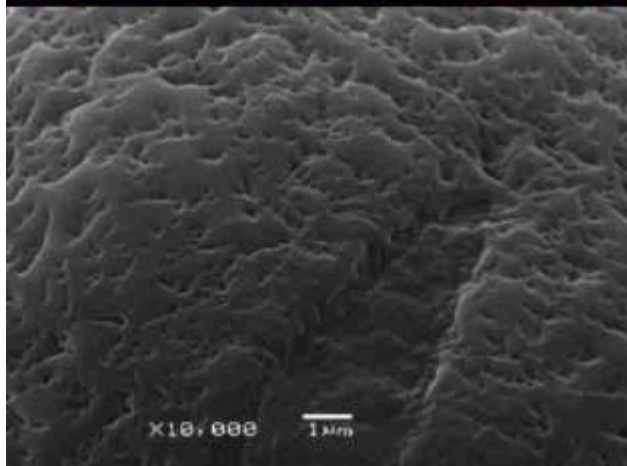
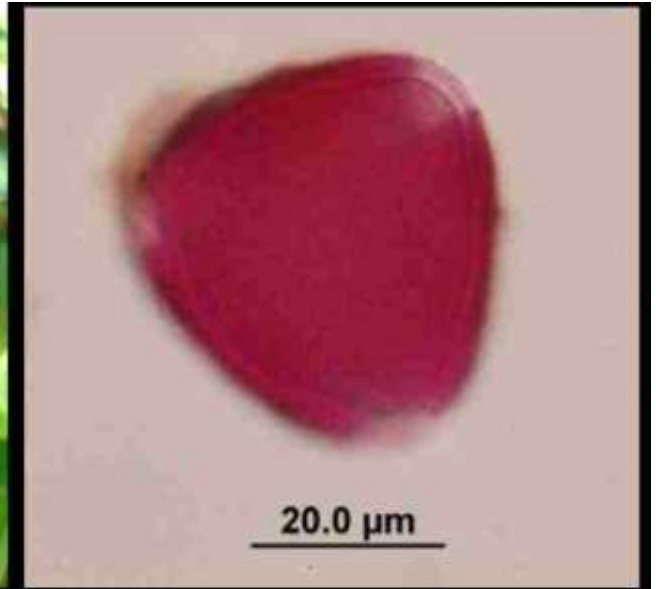
# *Tripogandra diuretica*

Commelinaceae



*Desmodium  
adscendens*

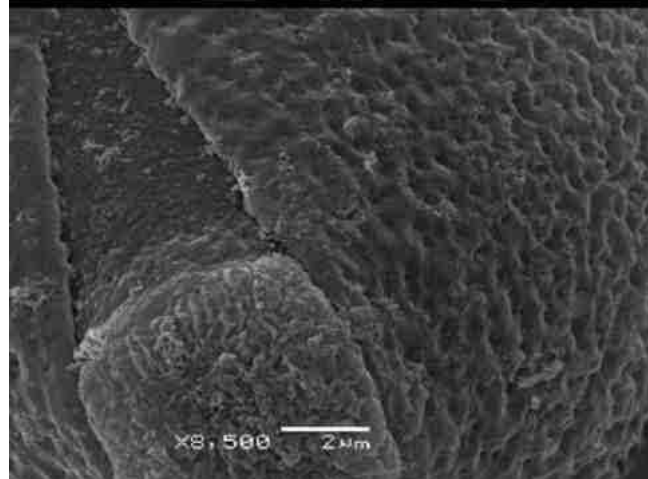
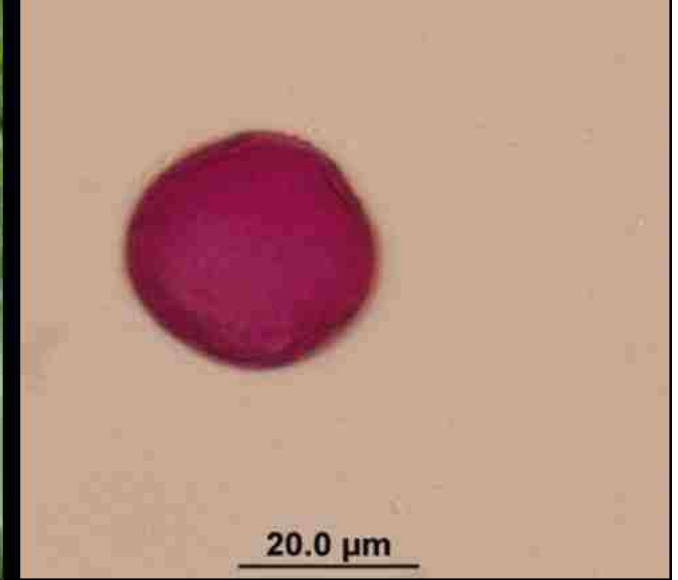
Fabaceae





*Desmodium  
affine*

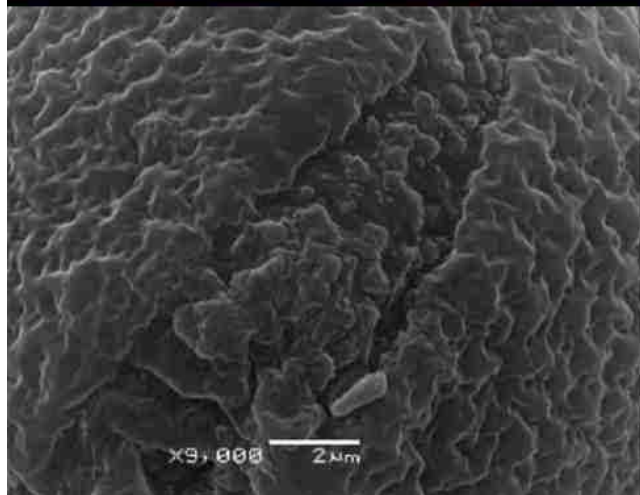
Fabaceae





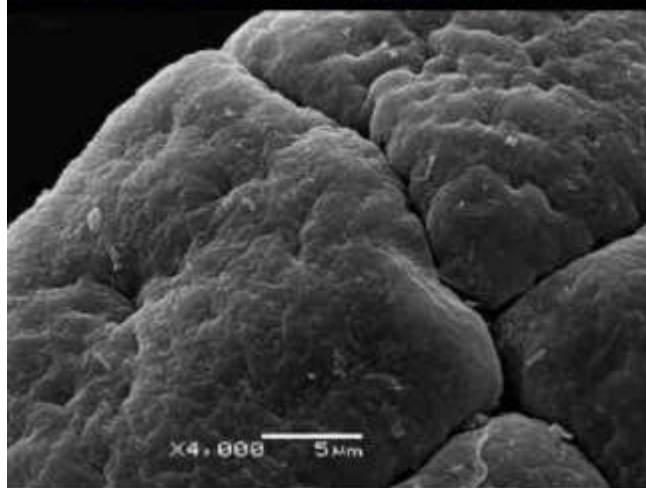
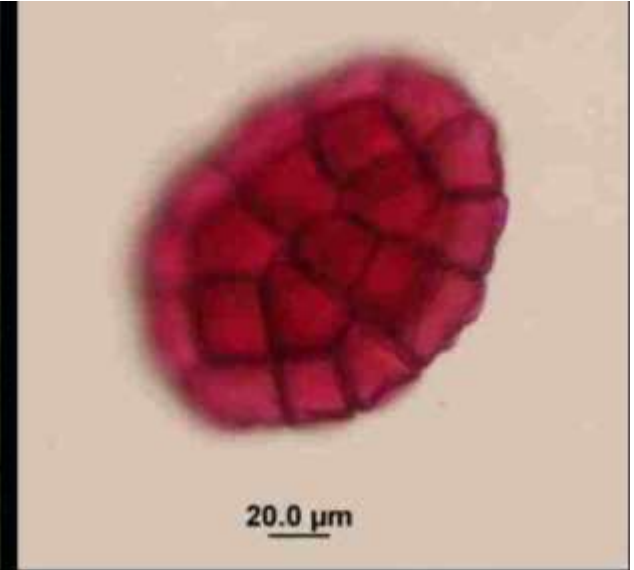
*Desmodium  
incanum*

Fabaceae



# *Inga edulis*

Fabaceae

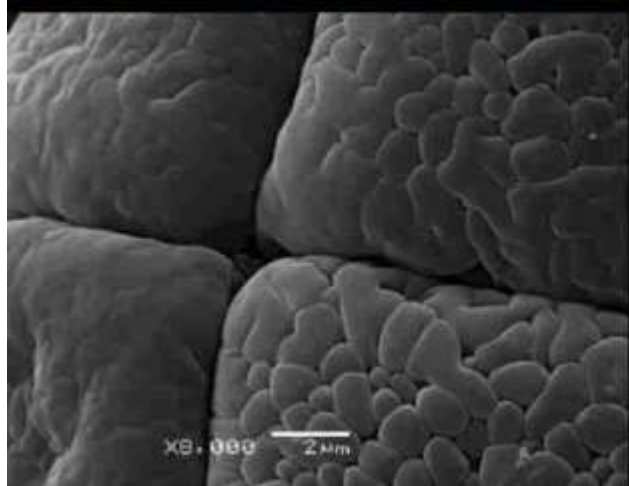
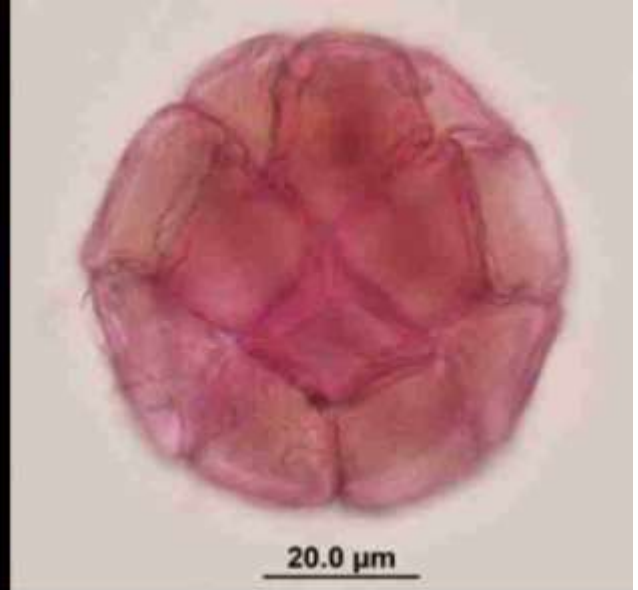


# *Inga marginata*

Fabaceae



Foto: J. M. T. de Souza

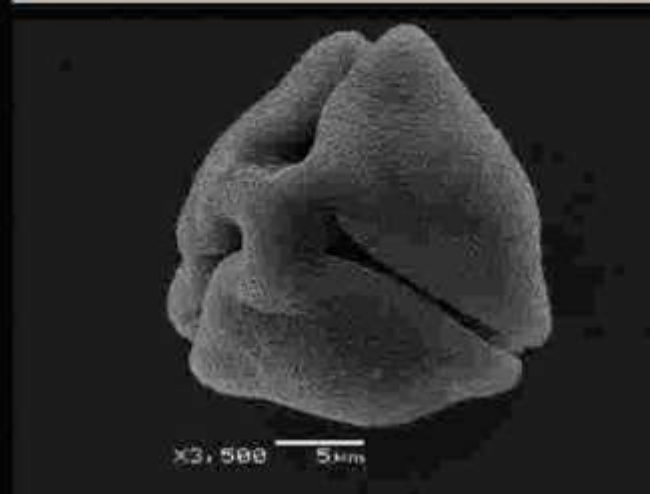
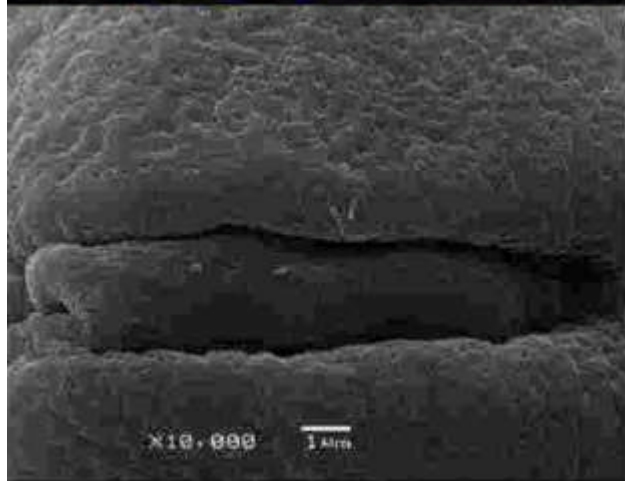
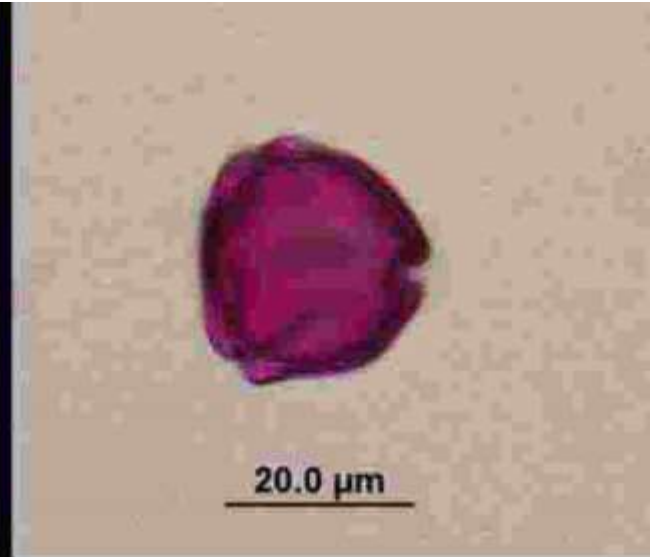


# *Senna multijuga*

Fabaceae



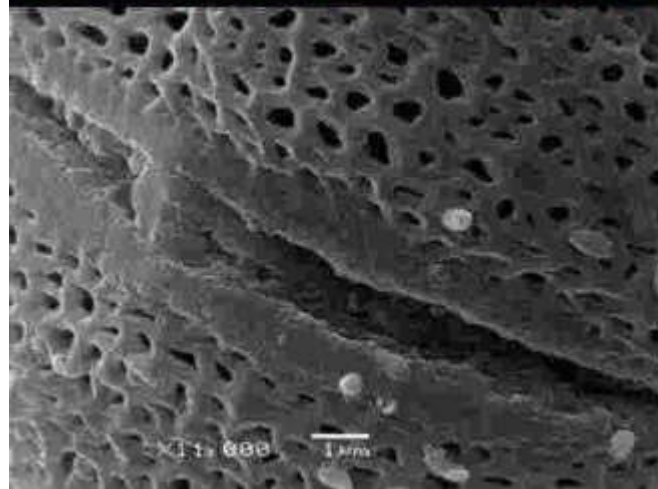
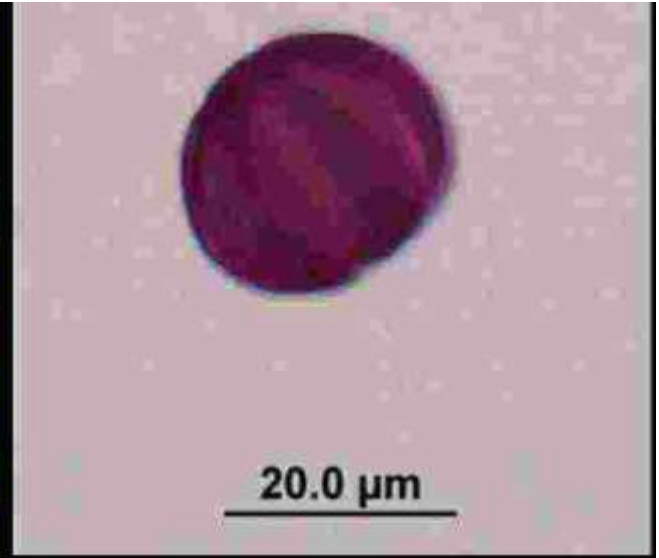
Foto: J. M. T. de Souza





*Hyptis  
lappulacea*

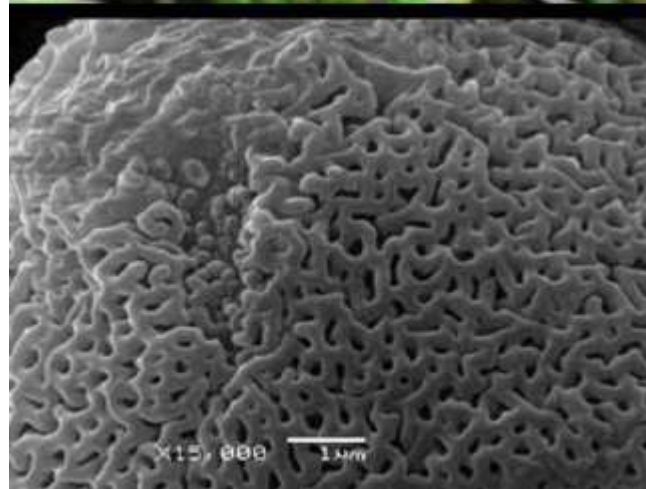
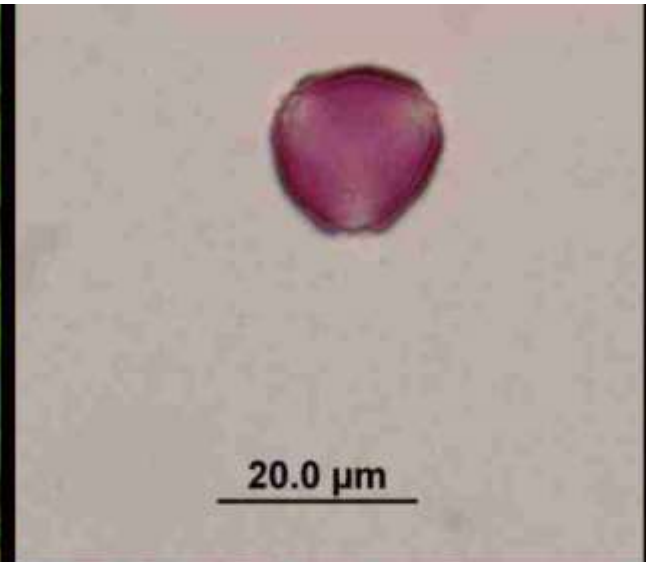
Lamiaceae





# *Lobelia sp.*

Lobeliaceae

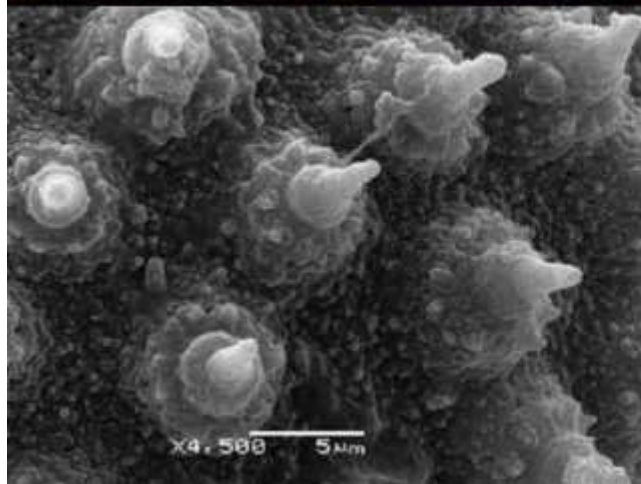
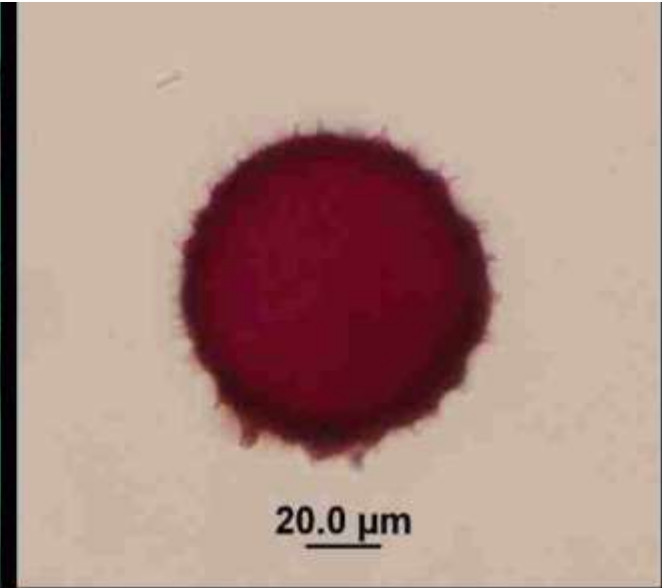


*Sida  
planicaulis*

Malvaceae

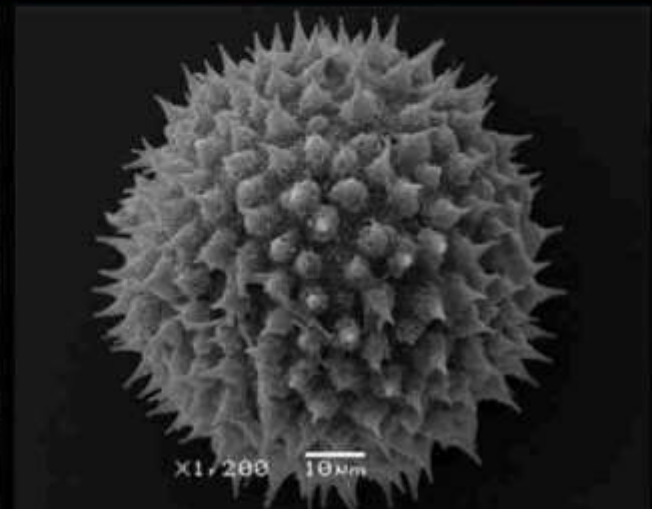
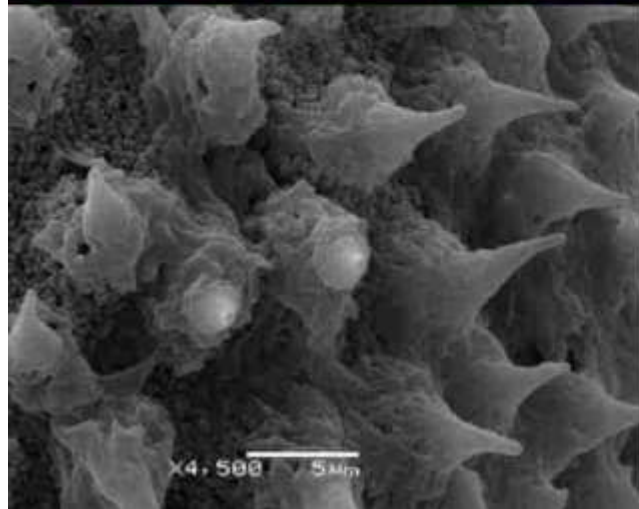
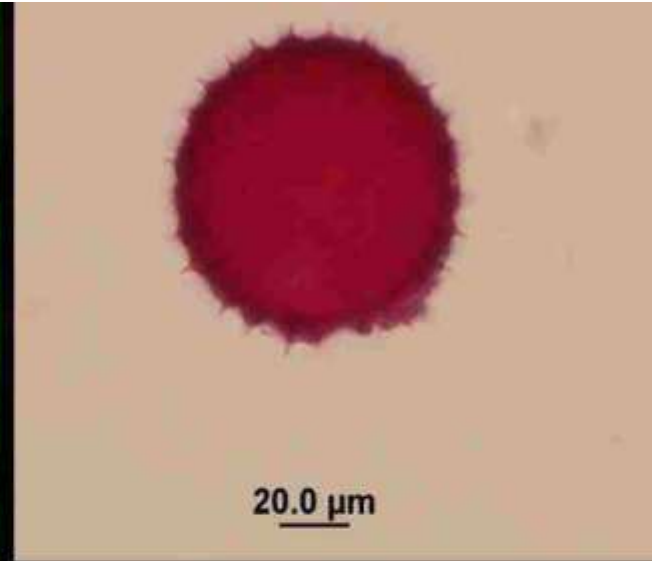


Foto: J. M. T. de Souza



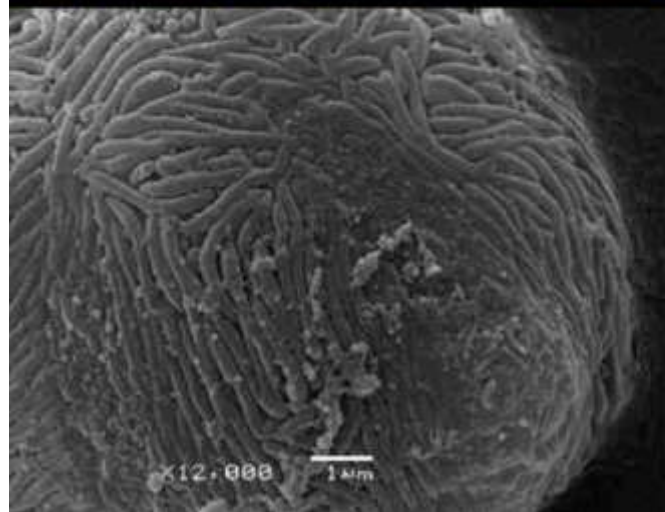
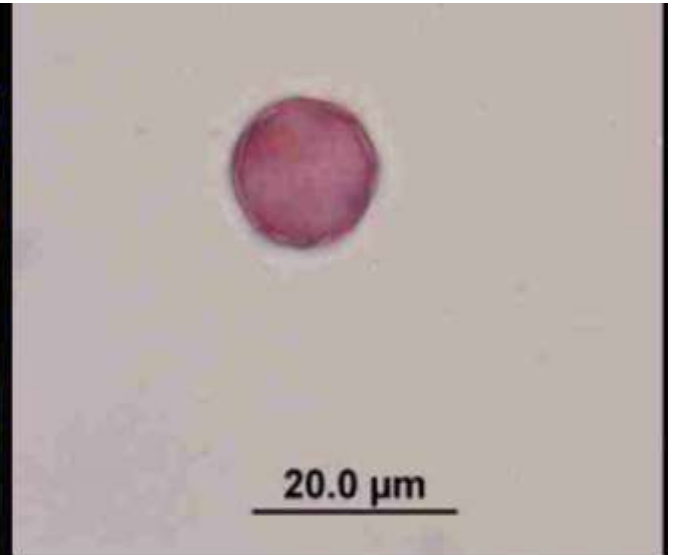
# *Sida rhombifolia*

Malvaceae



# *Chaetogastra clinopodifolia*

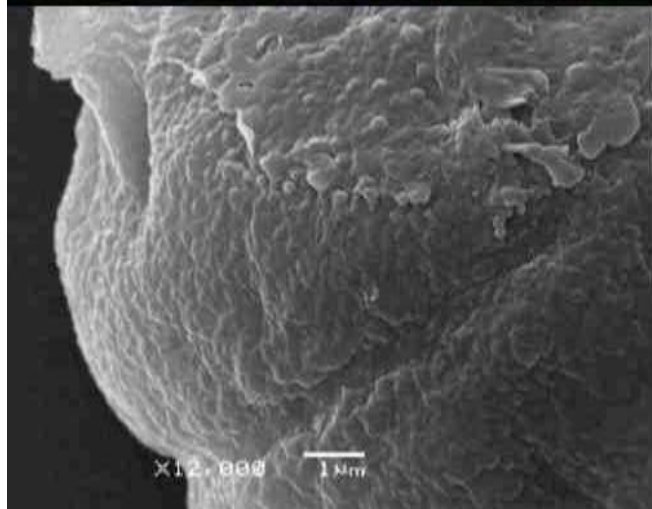
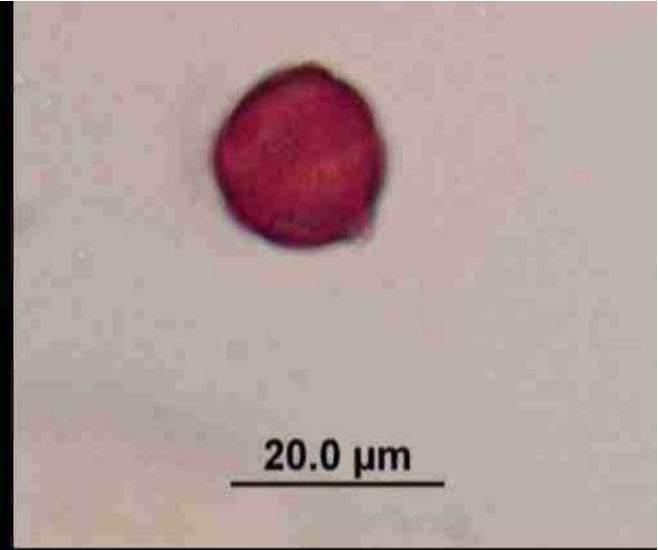
Melastomataceae





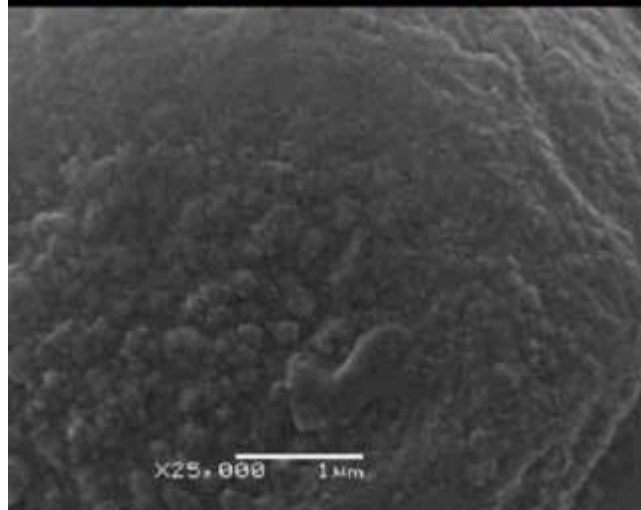
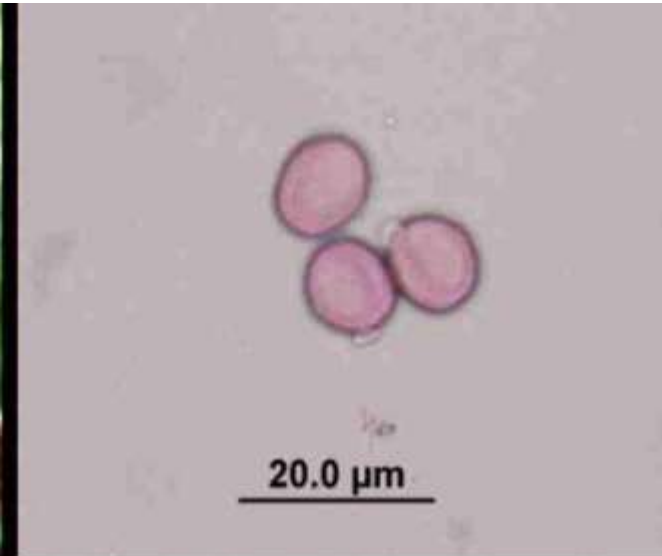
*Clidemia*  
*hirta*

Melastomataceae



# *Leandra reversa*

Melastomataceae

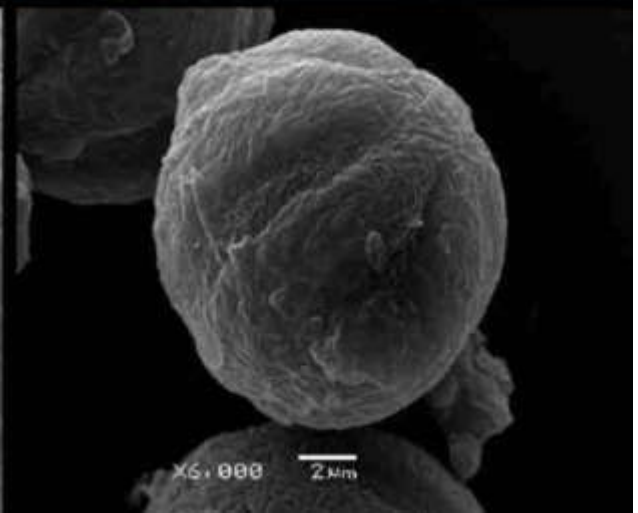
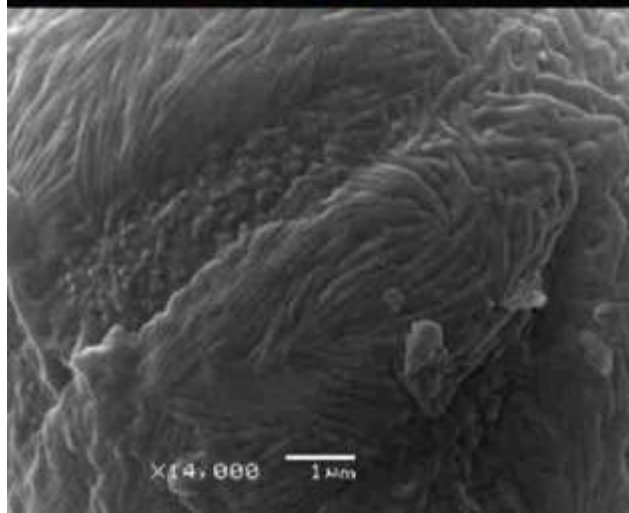
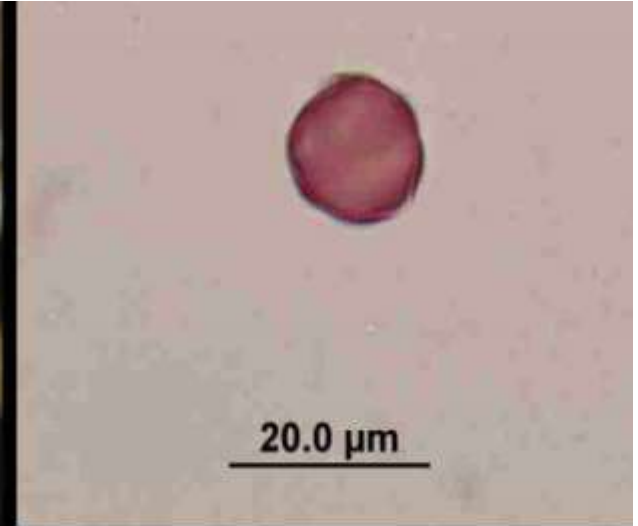


***Miconia cinerascens***

Melastomataceae

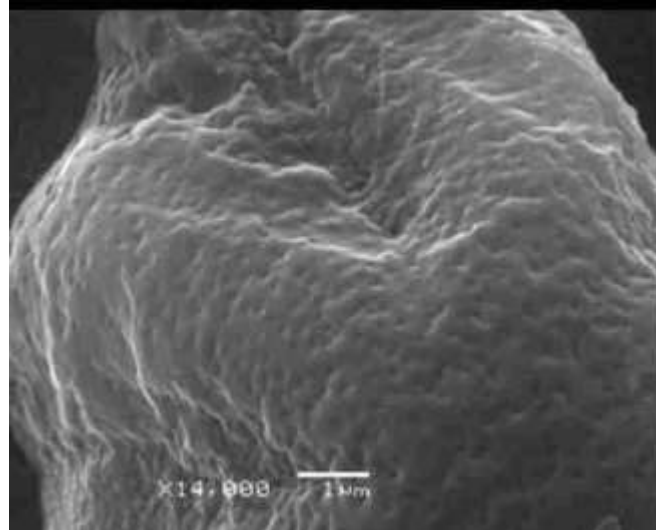
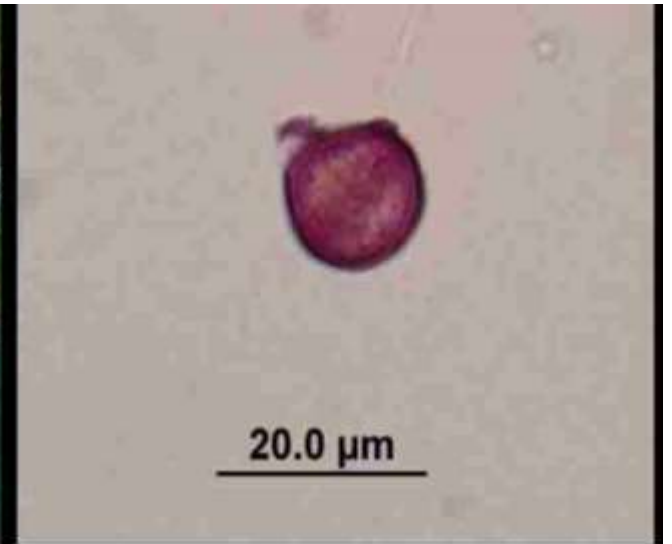


Foto: R. Goldenberg



*Miconia  
latecrenata*

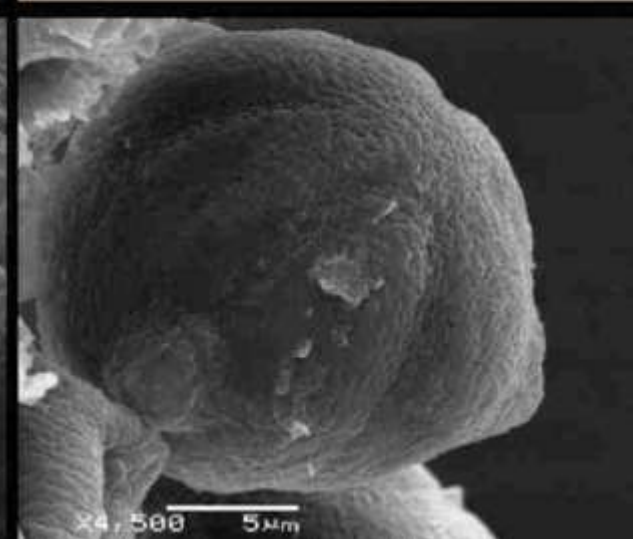
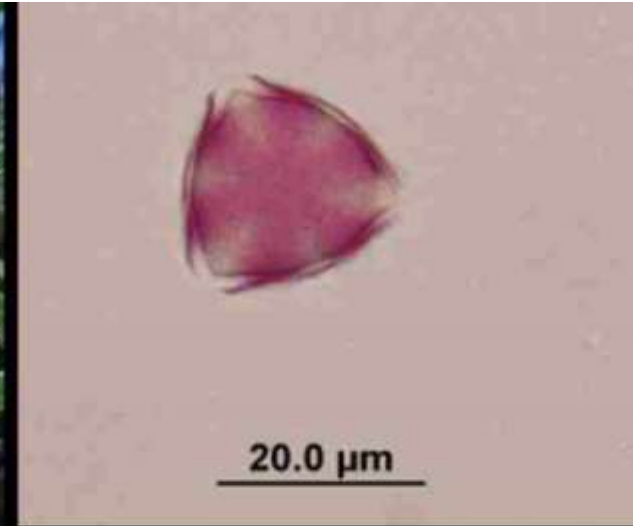
Melastomataceae





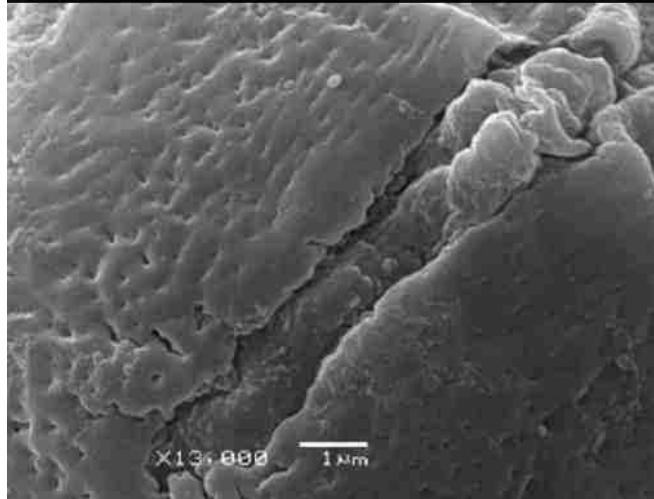
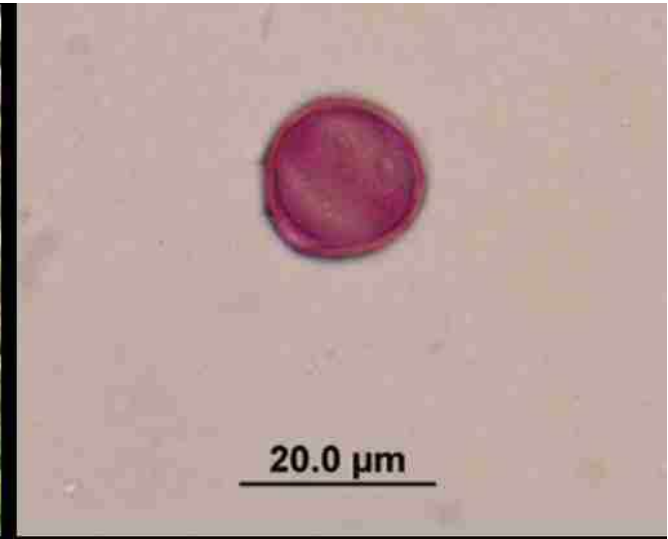
*Pleroma  
caissara*

Melastomataceae



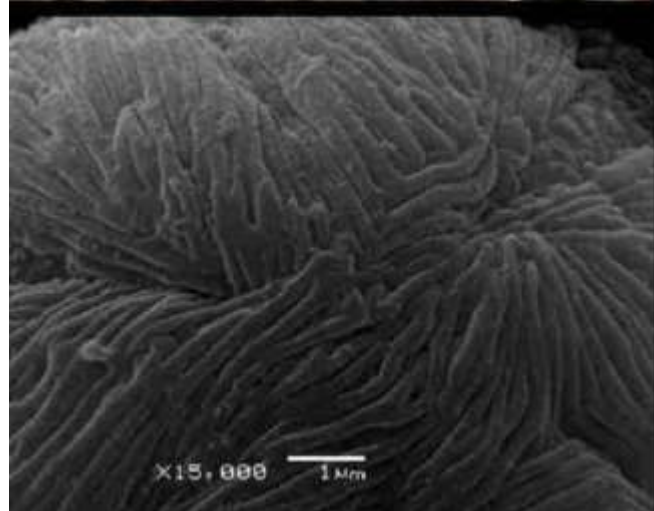
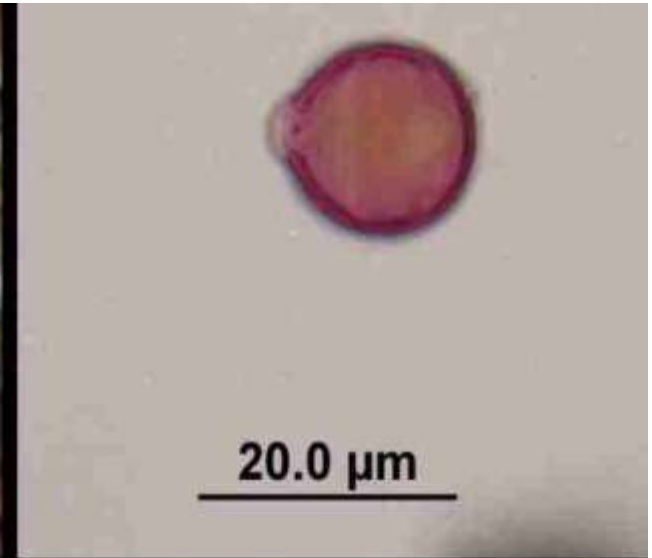
# *Pleroma trichopoda*

Melastomataceae



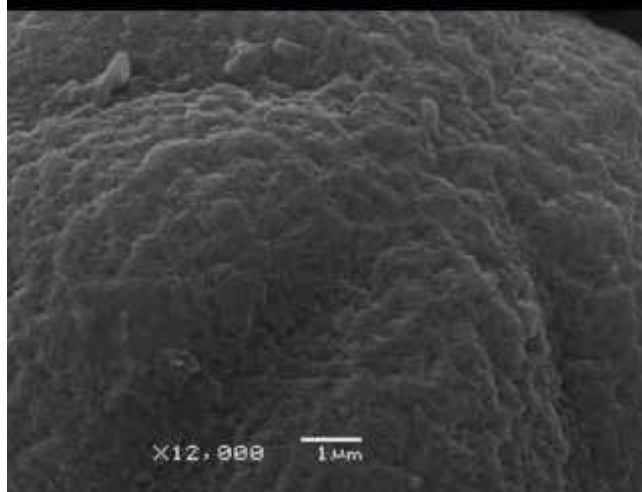
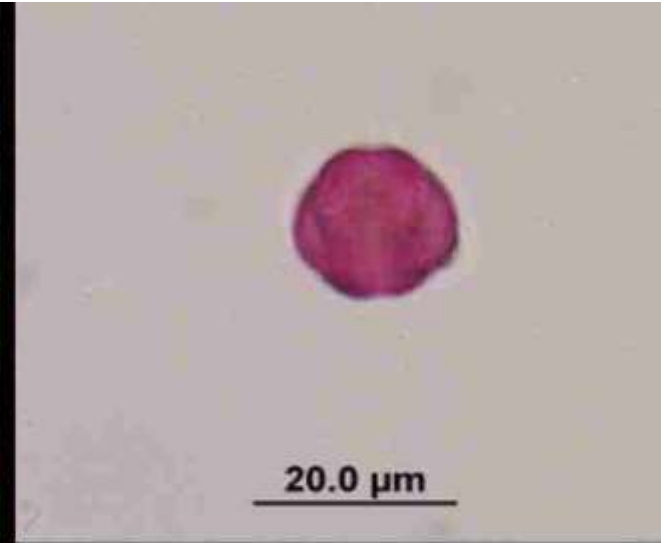
# *Pterolepis glomerata*

Melastomataceae



*Tibouchina  
clavata*

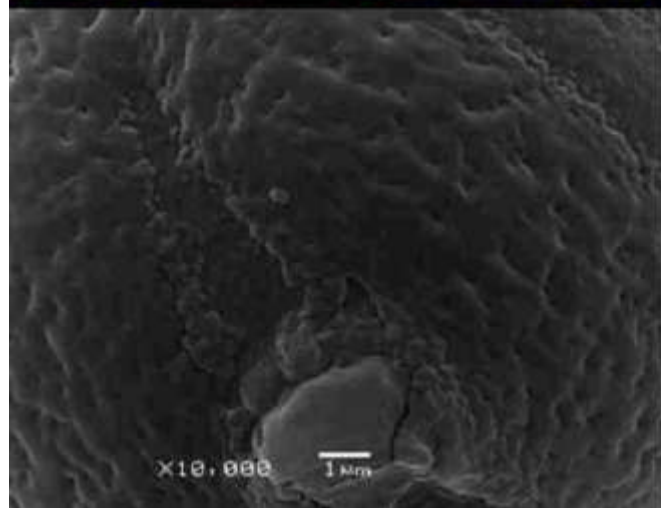
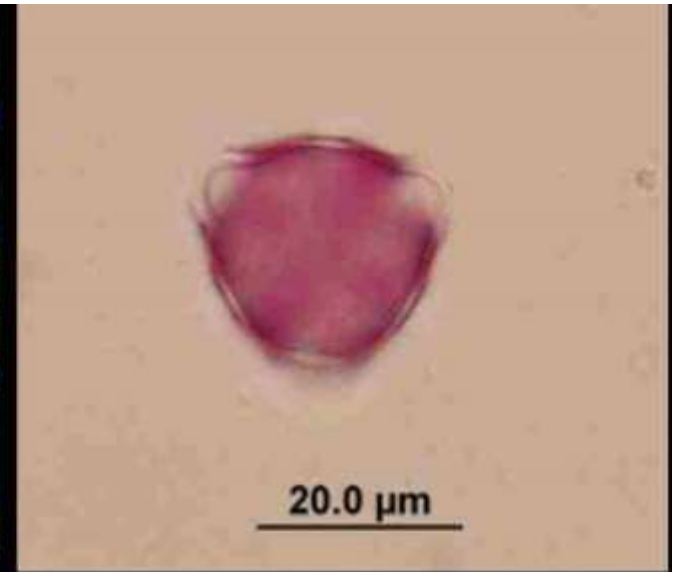
Melastomataceae





# *Tibouchina pulchra*

Melastomataceae

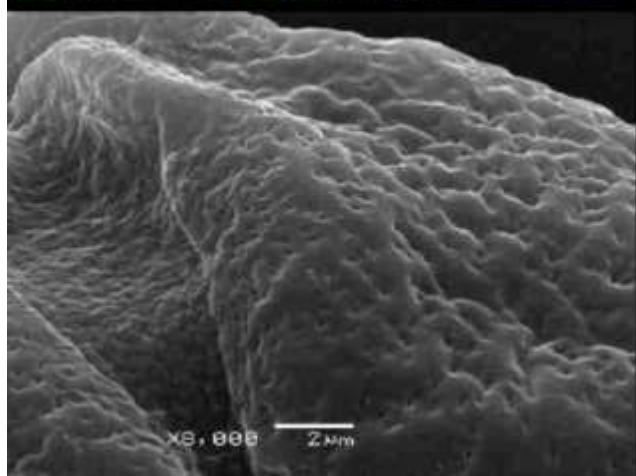
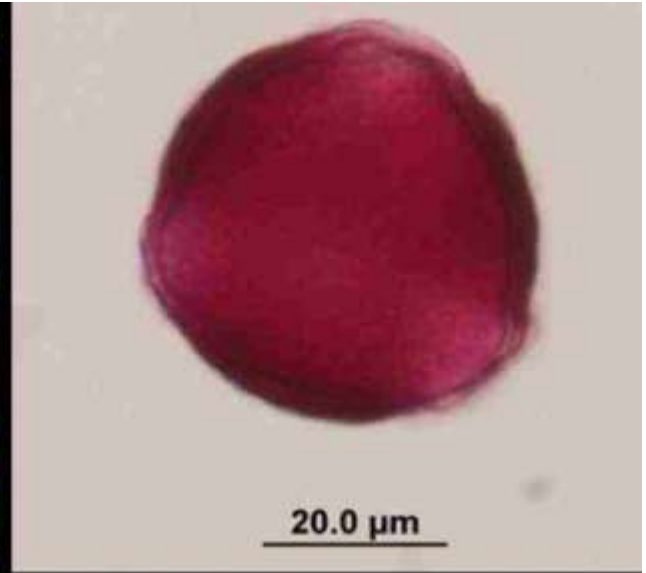


# *Psidium guajava*

Myrtaceae

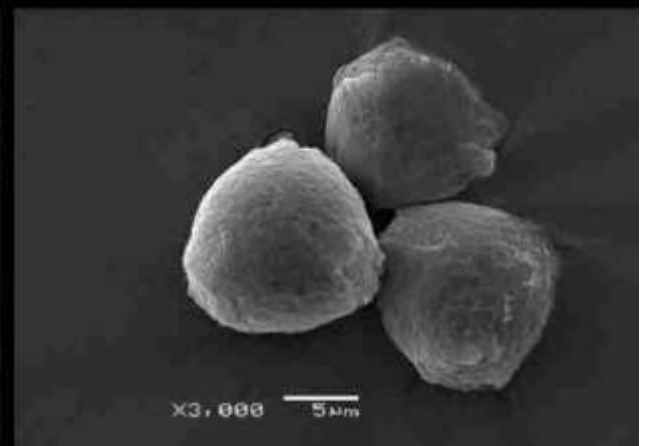
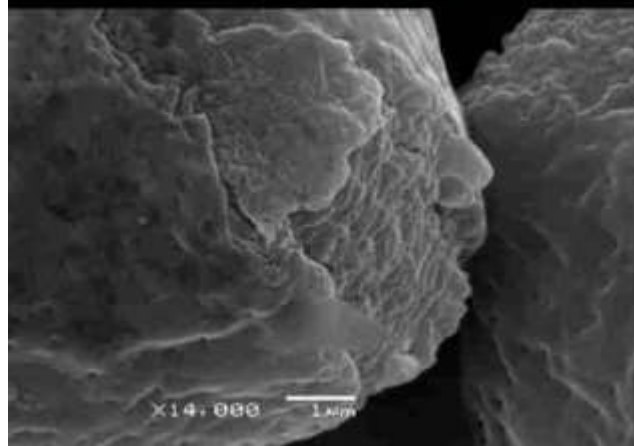
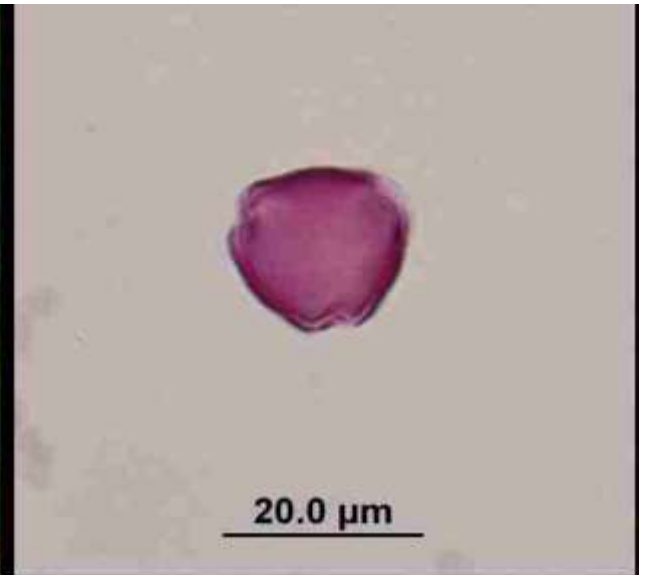


Foto: D. F. Lima



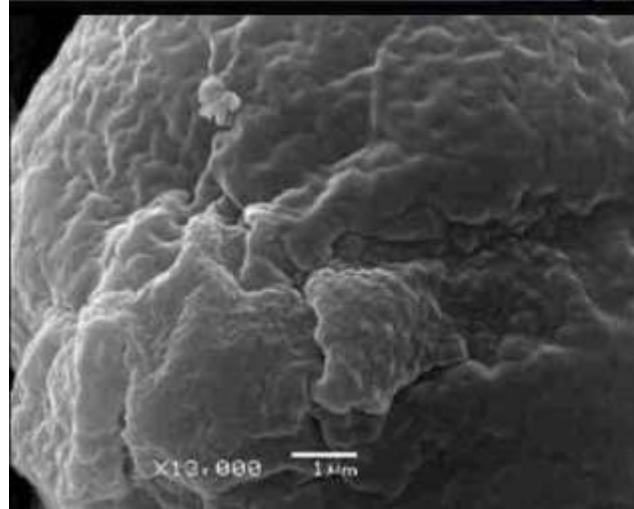
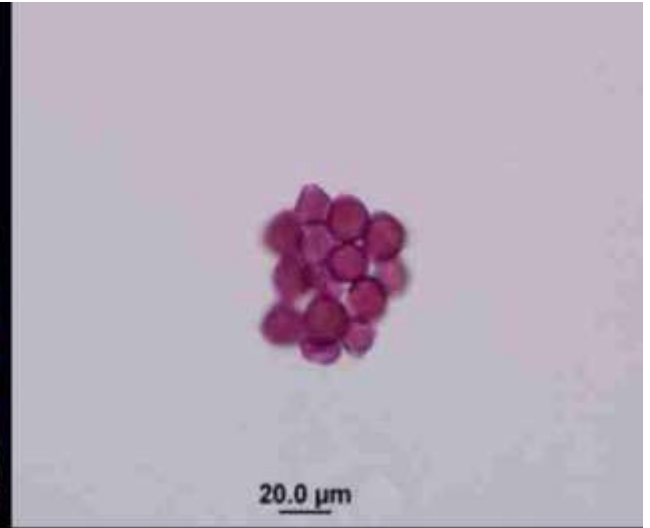
# *Achetaria ocymoides*

Plantaginaceae



# *Conobea scoparioides*

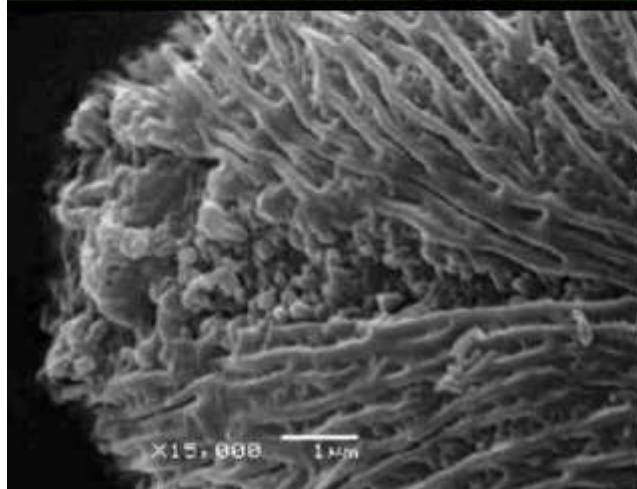
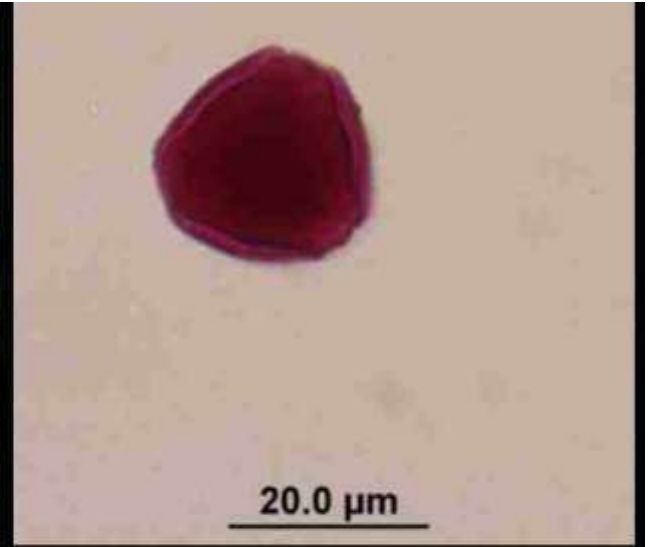
Plantaginaceae





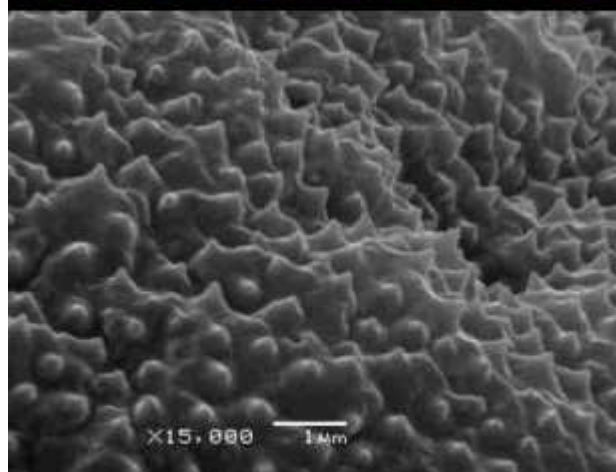
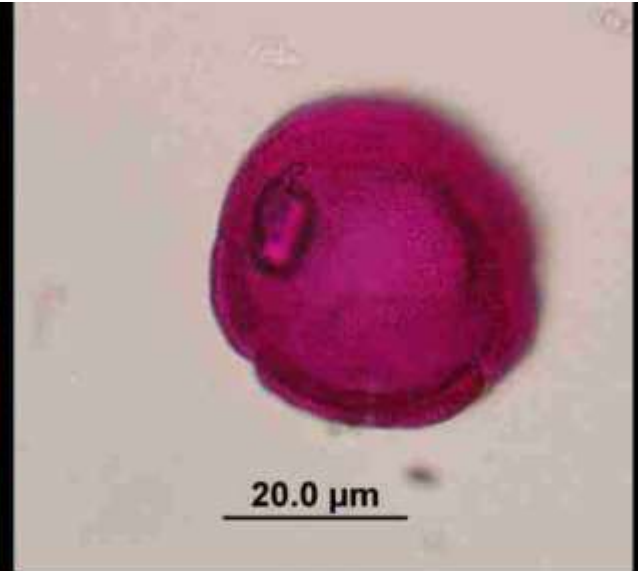
# *Rubus rosaefolius*

Rosaceae



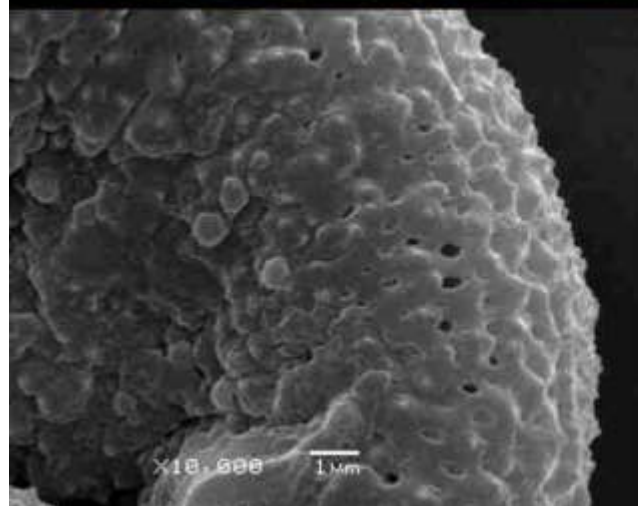
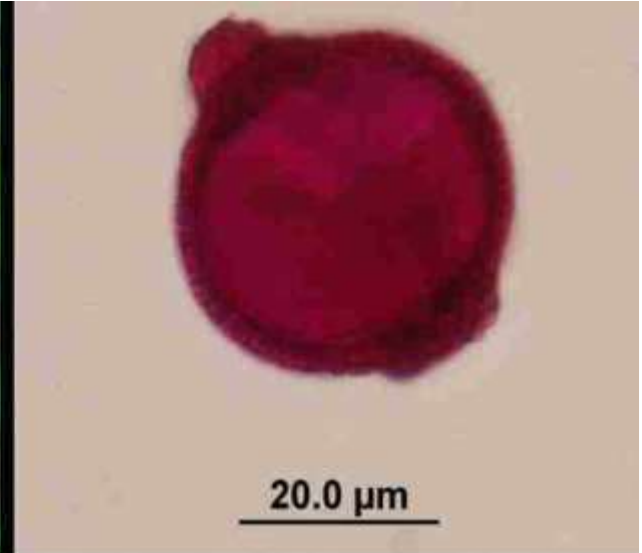
*Dioidia  
saponariifolia*

Rubiaceae



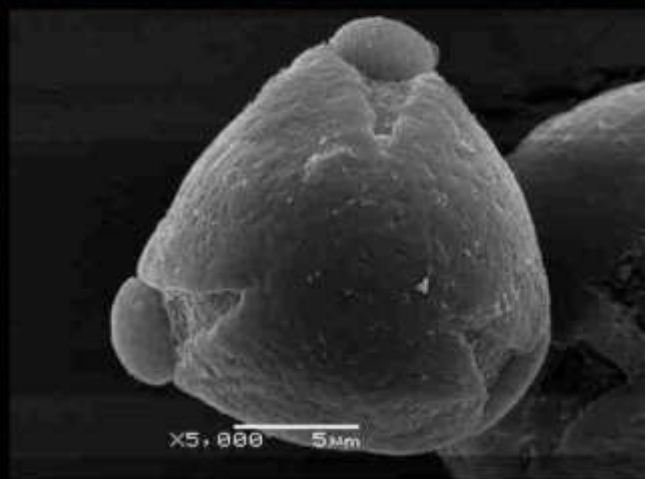
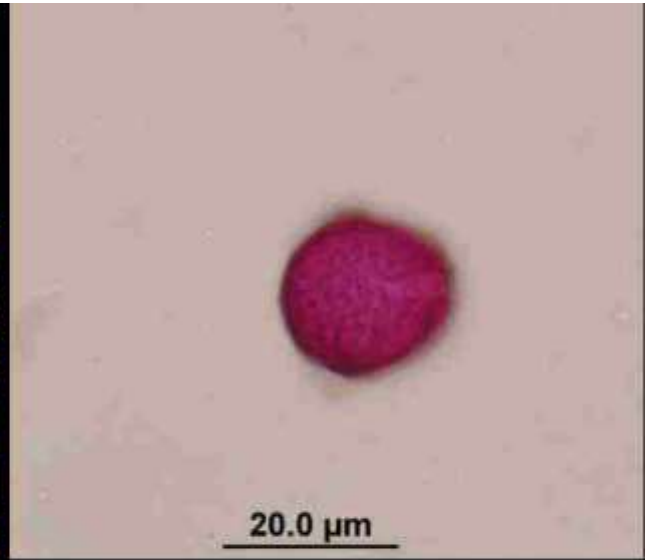
# *Spermacoce ocymifolia*

Rubiaceae



# *Casearia sylvestris*

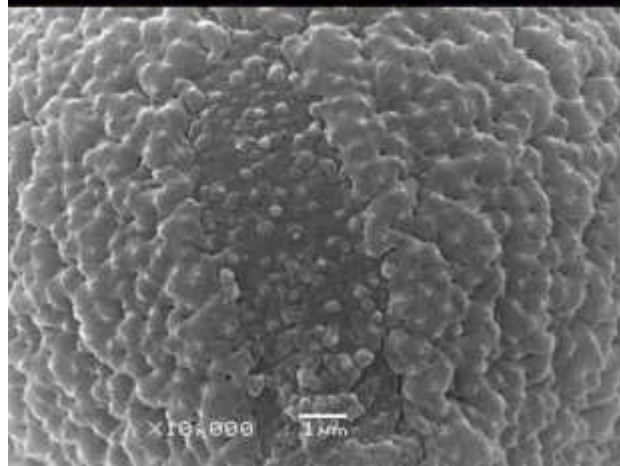
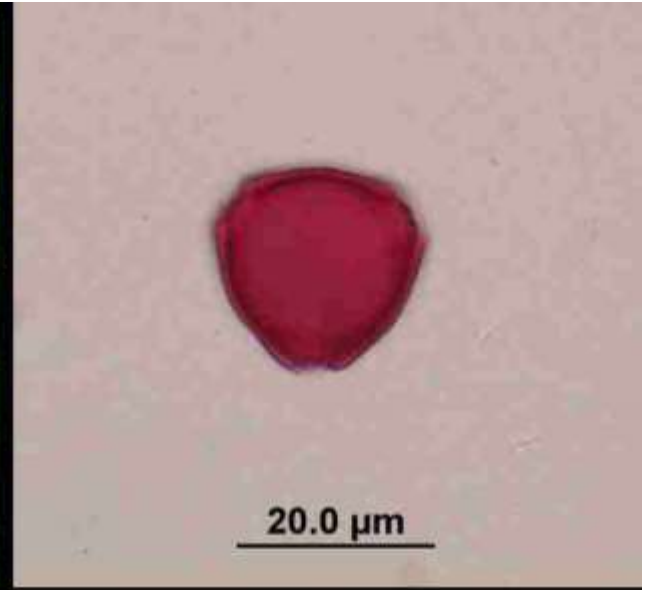
Salicaceae





# *Acnistus arborescens*

Solanaceae

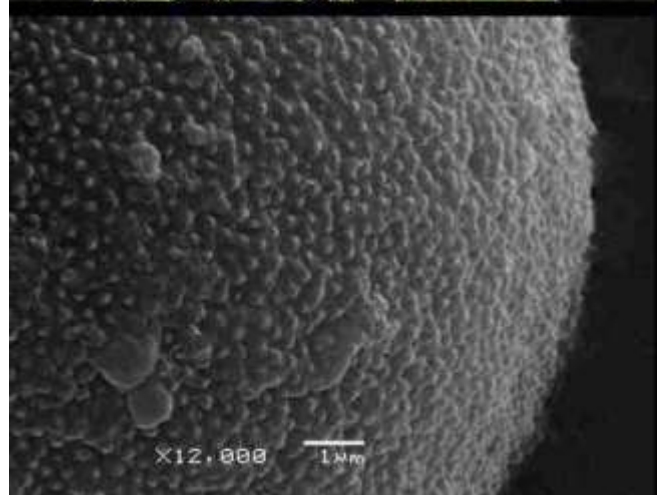


# *Solanum paniculatum*

Solanaceae

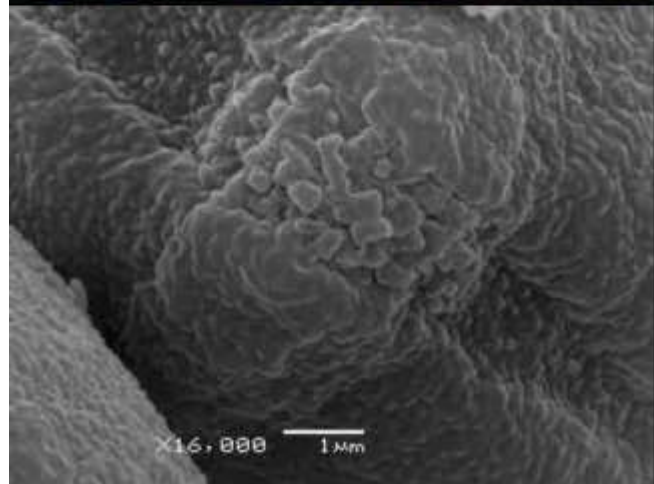
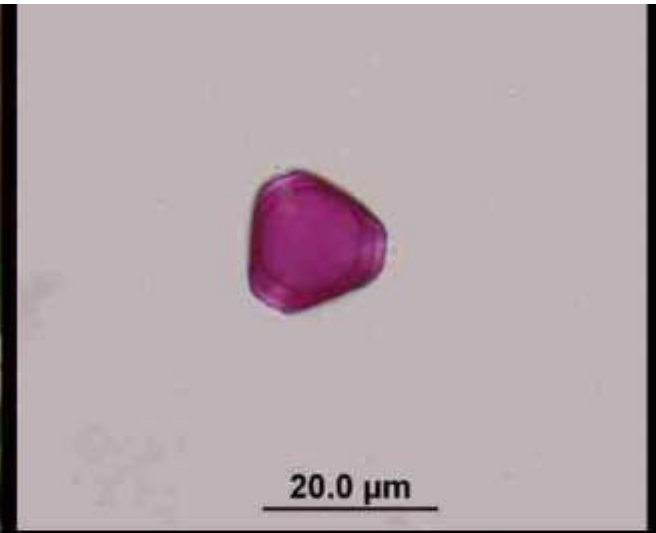


Fonte: Lorenzi & Matos, 2008



# *Solanum pseudoquina*

Solanaceae

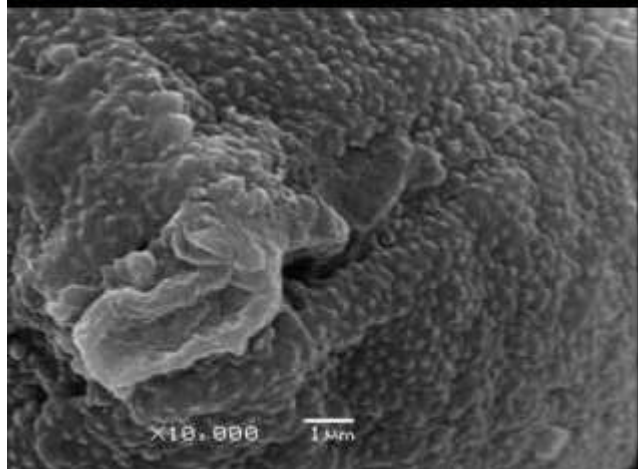
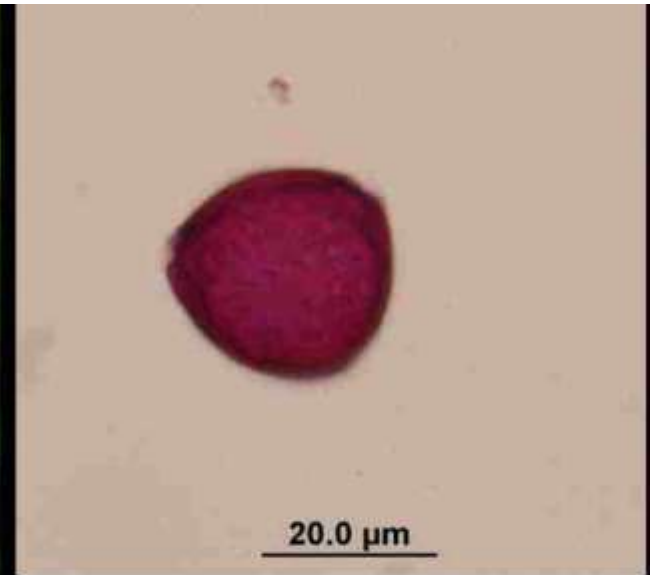


# *Solanum rufescens*

Solanaceae



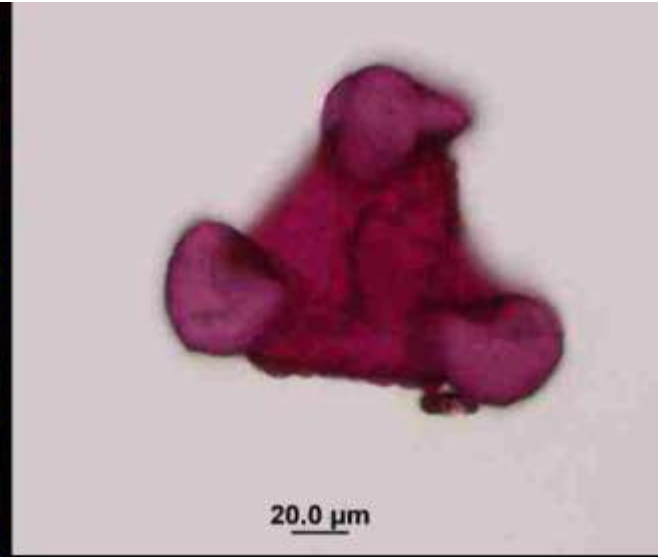
Foto: J. M. T. de Souza





*Stachytarpheta  
maximiliani*

Verbenaceae



# Catálogo de pólen da Mata Atlântica

Espécies que ocorrem nas áreas de restauração da SPVS  
(Versão com melhor definição disponível em  
<https://laboratoriodeinteracoes.wordpress.com/new-novidades>)

Edição:

**Caroline Ribeiro – Isabela G. Varassin – Jana M. T. de Souza**

Universidade Federal do Paraná  
Laboratório de Interações e Biologia Reprodutiva  
Departamento de Botânica

Programa Institucional de Bolsa de Iniciação Científica – PIBIC  
Pró-Reitoria de Pesquisa e Pós Graduação - PRPPG  
Apoio financeiro do CNPq

