



SHARING THE NATURE: MAMMALS AND NEIGHBOR HUMAN POPULATION OF A PROTECTED AREA IN THE ATLANTIC FOREST, BRAZIL

Rodrigo Paulo da Cunha Araújo^{1*}, André Lucas Amaral Monteiro Rodrigues¹ & Maron Galliez¹

¹ Instituto Federal do Rio de Janeiro, Departamento de Ciências Biológicas e Biotecnologia, Laboratório de Ecologia e Manejo de Animais Silvestres, CEP: 20270-021. Maracanã, Rio de Janeiro, RJ, Brazil.

E-mails: rodrigopaulo.ca@gmail.com (*corresponding author); andrelucasamr@gmail.com; maron.galliez@ifrj.edu.br

Abstract: The establishment of protected areas is central for biodiversity conservation, but it may cause conflicts between the environmental agencies and the local citizens. In this study we aimed to survey the medium and large sized mammals in an Atlantic Forest protected area located in the state of Rio de Janeiro, Brazil. We also aimed to understand how the local citizens felt about the establishment of the Paraíso Unit. Between June and December 2015, we used 1,754 camera-days to record the mammals of Três Picos State Park – Paraíso Unit. To assess the citizens' feeling about the Paraíso Unit, we conducted 22 interviews. We recorded 10 species, belonging to seven orders, classified into four dietary guilds. Among recorded species, four species are considered vulnerable in the state of Rio de Janeiro: *Puma concolor*, *Leopardus pardalis*, *Pecari tajacu*, and *Cuniculus paca*. A part of the citizens claimed losses in their activities. The main complaints were about the lack of dialogue with the park administration, the restricted access to waterfalls and trails inside the park and downturn in local commerce. According to the interviewed residents, the poaching pressure was greater on *C. paca*, *Dasybus novemcinctus*, and *Dasyprocta leporina*. To minimize the conflicts Paraíso Unit must improve the protected area governance, implementing its management plan in a participatory, inclusive and equity way.

Keywords: species inventory; environmental conflicts; anthropogenic impacts.

INTRODUCTION

The Atlantic Forest has 321 mammalian species (Graipel *et al.* 2017) and is one of the most diverse and threatened biomes of the world (Myers *et al.* 2000, Mittermeier *et al.* 2011). Originally, it covered an area between 1.01 and 1.62 million km² from the states of Rio Grande do Norte to Rio Grande do Sul in Brazil (Muylaert *et al.* 2018). The intense degradation and fragmentation reduced this biome to approximately 28 % of its original extension (Rezende *et al.* 2018). The habitat fragmentation (Lindenmayer & Noss 2006), poaching (Cullen Jr. *et al.* 2001), and invasive species, such as domestic

dogs and cats (Lessa *et al.* 2016), are considered the greatest threats to the biodiversity of this biome. These anthropogenic pressures affect population demography and other ecological processes (Fischer & Lindenmayer 2007). Poaching is one of the main factors that promote species local extinction (Redford 1992, Carrillo *et al.* 2000, Cullen Jr. *et al.* 2000, 2001, Escamilla *et al.* 2000). This is even more problematic for species with long life cycle and low intrinsic growth rate (Bodmer *et al.* 1997), like top predators and large herbivorous. Interactions with domestic dogs and cats also negatively affect mammalian populations (Srbek-Araujo & Chiarello 2008, Lessa *et al.* 2016), as domestic animals

compete for territory, transmit pathogens, and predate on native wildlife (Gompper 2013, Lessa *et al.* 2016). Dogs are considered the most abundant carnivores in several natural areas (Hughes & Macdonald 2013), including in the Atlantic Forest (Paschoal *et al.* 2012).

The establishment of protected areas (PA) is one of the central strategies for biodiversity conservation (Rodrigues *et al.* 2004, Chape *et al.* 2005). The Convention on Biological Diversity aims the conservation of at least 17 % of terrestrial areas with an effective and equity management by 2020 (CBD 2010). The establishment of new PA may cause conflicts between the environmental agencies and the local citizens. Besides, people who have experienced some kind of negative interaction with wildlife tend to be less receptive to conservation actions (Ericsson *et al.* 2003, Jonker *et al.* 2006). The lack of management plan and monitoring systems in most of the Brazilian PAs (Cerqueira *et al.* 2001) make conflict minimization difficult.

In this study, we aimed to describe the mammalian fauna of medium and large size in the Paraíso Unit of the Três Picos State Park, the largest protected area of the state of Rio de Janeiro. We also aimed to understand how the residents felt about

the establishment of the Paraíso Unit and estimated the threats (poaching intensity and abundance of domestic animals) to mammals in this protected area.

MATERIAL AND METHODS

Study area

The present study was focused on the Paraíso Unit of the Três Picos State Park (Núcleo Paraíso do Parque Estadual dos Três Picos; 22°29'41.1"S, 42°54'34.5"W), Guapimirim, state of Rio de Janeiro (Figure 1). The Paraíso Unit is the former Paraíso State Ecological Station (Estação Ecológica Estadual do Paraíso) and covers an area of 4,920 ha, located next to the foothills of the Serra dos Órgãos (INEA 2013). The Paraíso State Ecological Station was established in 1987, but in 2013 it was incorporated by Três Picos State Park. Nowadays the Três Picos State Park (PETP) is the largest PA in the state, with an area of 65113.04 ha (INEA 2013). The entrance to the Paraíso Unit is located in the neighborhood of the same name, in a rural zone. Small crops – mainly cassava and maize – and cattle pasture dominate the surroundings of PETP. The climate of the region is wet and warm, the total annual rainfall

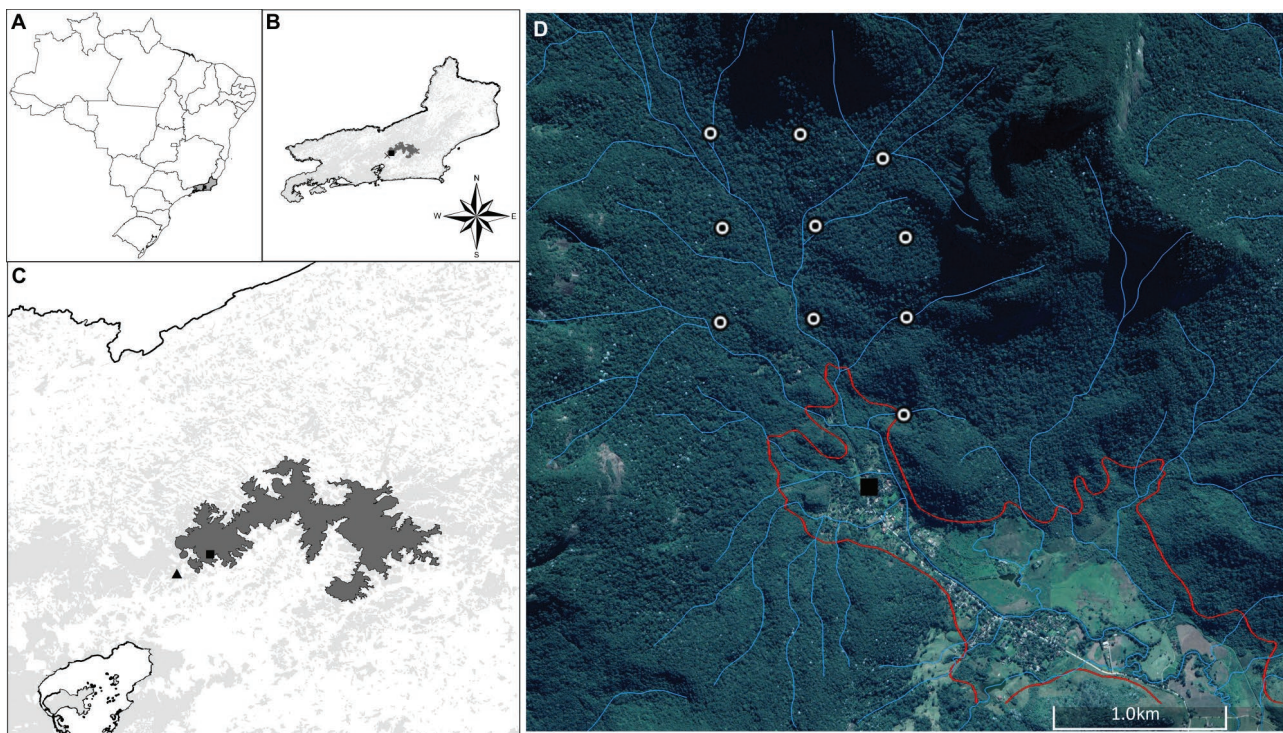


Figure 1. A) Location of the study area in Brazil and B) in the state of Rio de Janeiro; C) The PETP (dark grey) with the sampled area (black square) and the nearby city (black triangle); D) Sampling points (White dots) and the headquarters of the Três Picos State Park – Paraíso Unit (black square).

varies between 2.000 a 3.000 mm and the mean annual temperature is 23 °C (Kurtz & Araújo 2000). The vegetation is composed of montane and sub-montane ombrophilous dense forests (INEA 2013) in different stages of conservation.

Data collection

Camera traps

We established 10 sampling points, spaced approximately 500 m apart, between 100 m and 290 m altitude, each containing one camera trap (Bushnell, models 119436, 119438 and 119439), in the Paraíso Unit (Figure 1). Sampling points were fixed at animal trails in the forest. There was no road or human trail in most part of this area of the park. We recorded the geographic coordinates of each sampling point using a GPS receiver. Camera traps were installed on trees 45 cm above the ground, facing the trails with mammal tracks or broken branches. No baits were used to lure mammals to the sampling point. Camera trap were programmed for continuous operation from June to December 2015. We checked the camera traps monthly to replace batteries and memory cards. We identified the recorded species to the lowest possible taxonomic level according to the nomenclature followed by Paglia *et al.* (2012).

Interviews

We used a semi-structured questionnaire (Supplementary Material 1) to determine possible conflicts between the residents of Paraíso neighborhood, which is adjacent to the park. The interviews were conducted for adult residents only and lasted approximately 30 minutes. We asked the interviewees about the identity of the hunted mammals in the area; the number of domestic dogs and cats they owned; and their opinion about the park implementations and restrictions for the local population. Due to the differences in poaching habits between men and women we separated the interviews by sex in order to detect if the poaching habit leads to different views of the Paraíso Unit. We conducted a total of 22 independent interviews. The interviews were considered independent when they were not performed among the members of the same family nucleus.

Data analysis

Richness of medium and large sized mammals was estimated monthly throughout the sampling period. The sample effort was defined as: number of camera traps × number of sampling days (Srbek-Araujo & Chiarello 2007). For a same species, independent records were those which had at least an hour of interval among each other (Goulart *et al.* 2009). The sampling effort sufficiency was determined by species-accumulation curve from the non-parametric estimator Jackknife 1 (S_j ; Magurran 2004). We characterized species according to their food habits based on Paglia *et al.* (2012). The relative frequency of the species records was calculated as: (the number of records per species / number total of records) * 100. Regarding the interviews, we used Mann-Whitney U test to verify if there was difference in satisfaction with the park establishment between men and women. The poaching intensity (P_i) was estimated by the relative frequency citation of each species by the residents in the interviews. We used the packages vegan (Oksanen *et al.* 2019), BiodiversityR (Kindt & Coe 2005), ggplot2 (Wickham 2016), devtools (Wickham *et al.* 2019) in R 3.5.2 (R Development Core Team 2018) to perform all analyses.

RESULTS

With a sampling effort of 1,754 camera-days, we obtained 280 records of medium and large sized mammals, with a sampling success of 16.0 %. We identified 10 different species, four omnivores, two carnivores, three herbivores, and one insectivore, belonging to seven orders and nine families (Table 1; Supplementary Material 2). We also recorded two small mammals: *Philander frenatus* and *Metachirus nudicaudatus* (Didelphimorphia, Didelphidae). Another mammal species registered was the domestic dog. The sampling effort was considered sufficient to characterize the medium and large mammalian species of the Três Picos State Park – Paraíso Unit (Figure 2), because the observed species number represented 83.5 % of the expected richness ($S_j = 11.98 \pm 1.40$). Five to eight medium and large mammalian species were recorded each month. Among the recorded species, four are classified as vulnerable in the state of Rio de Janeiro: *Puma concolor*, *Leopardus pardalis*, *Pecari tajacu*, and *Cuniculus paca*.

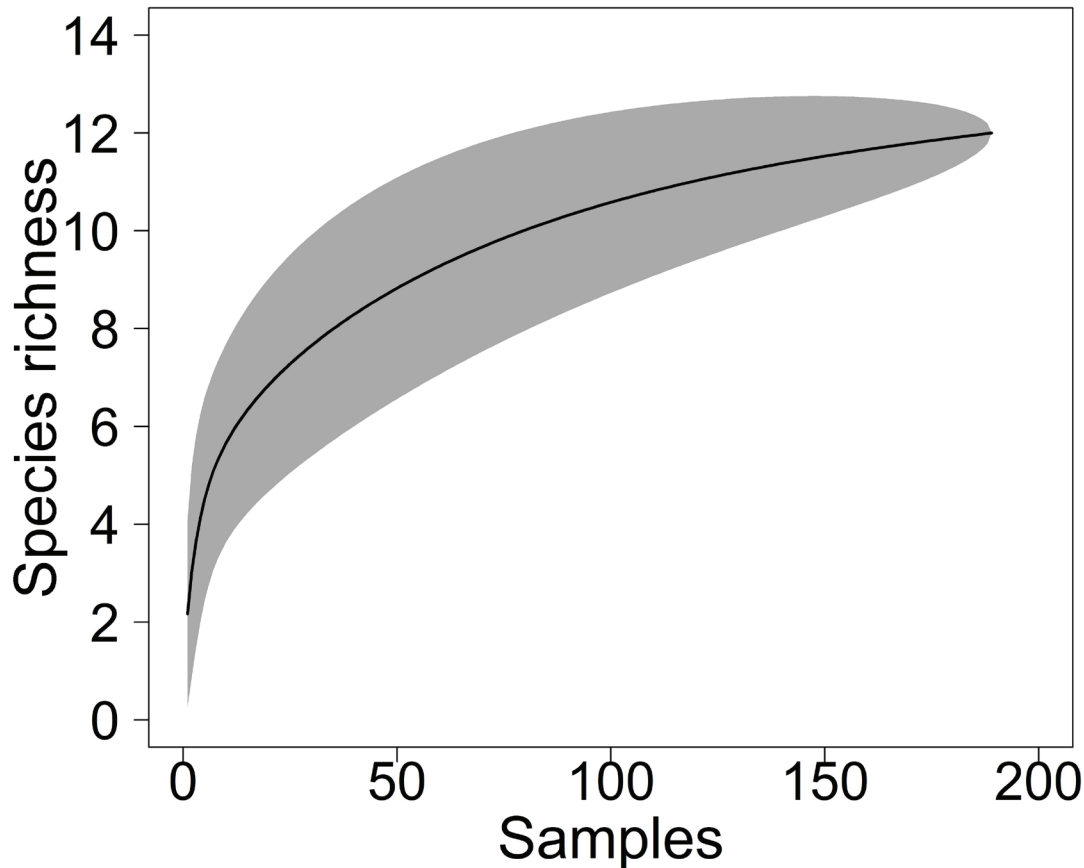


Figure 2. General accumulative curve for the sampled sites and the first order Jackknife estimator of species richness at the Três Picos State Park – Paraíso Unit. Expected species richness (continuous line) and the grey area indicates the standard deviation.

The species with the highest number of records was *Didelphis aurita* (N = 95), followed by *Dasyprocta leporina* (N = 90), *Dasyurus novemcinctus* (N = 46) and *Cuniculus paca* (N = 22). The species with the lowest frequency were the felids *Leopardus pardalis* and *Puma concolor*, and *Tamandua tetradactyla*, with only 0.1 % occurrence in the records (Figure 3).

Regarding the interviews (N = 22), there was no difference between men (N = 14) and women (N = 8) in satisfaction with the park (U = 39.5, n = 22, p = 0.228). For this reason, we group the data from both sexes. In general, the adult residents were satisfied with the establishment of the park in the region (mean satisfaction = 6.8; Table 2), and 12 residents rate the park 10 out 10. However, there had been several complaints about the park (Table 2). The main complaints were about the lack of dialogue between park administration and the neighbor citizens (86.3 %), the restricted access to waterfalls and trails inside the park (68.2 %) and

downturn in local commerce (22.7 %).

In the view of the residents, the park faces problems of lack of staff (63.3 %) and poaching (59.1 %). Only 13 residents reported on animals being hunted in the region (Table 1). Poaching intensity was higher on *Cuniculus paca* ($P_1 = 0.62$), followed by *Dasyurus novemcinctus* ($P_1 = 0.54$) and *Dasyprocta leporina* ($P_1 = 0.46$). Most of the residents (N = 15) owned dogs or cats. Among the 22 residents interviewed, 14 had one or more dogs and six had cats. In total, there were 33 dogs and 25 cats in the park vicinity.

DISCUSSION

Medium and large terrestrial mammals observed in the Paraíso Unit, a former ecological station, represents approximately 3.1 % of all medium and large mammal species in the Atlantic Forest biome (Graipel *et al.* 2017). The species recorded in Paraíso Unit were present in other areas of Central

Table 1. Medium and large sized mammals of the Três Picos State Park – Paraíso Unit, Guapimirim, Rio de Janeiro. Threat status: LC = least concern, NT = near threatened, VU = vulnerable; Ex = exotic. Taxonomic names and trophic guild according to Paglia *et al.* (2012). Poaching intensity was estimated based on the responses of the interviews with the inhabitants of the region. Threat level according to Bergallo *et al.* (2000; Rio de Janeiro); ICMBio (2018; Brazil); IUCN (2019; World).

Species	Common Name	Trophic guild	Number of records	Relative frequency (%)	Poaching intensity	Threat level		
						RJ	BR	World
Order Didelphimorphia								
Family Didelphidae								
<i>Didelphis aurita</i>	Big-Eared Opossum	Omnivorous	95	33.9	0.38	-	-	LC
<i>Philander frenatus</i>			1*	0.35*		-	-	LC
<i>Metachirus nudicaudatus</i>			2*	0.71*		-	-	LC
Order Pilosa								
Family Myrmecophagidae								
<i>Tamandua tetradactyla</i>	Collared Anteater	Insectivorous	2	0.71	-	-	-	LC
Order Cingulata								
Family Dasypodidae								
<i>Dasypus novemcinctus</i>	Common Long-Nosed Armadillo	Omnivorous	46	16.42	0.54	-	-	LC
Order Carnivora								
Family Canidae								
<i>Canis lupus</i>	Domestic dog		2*	0.71*		Ex	Ex	Ex
Family Felidae								
<i>Leopardus pardalis</i>	Ocelot	Carnivorous	1	0.35	-	VU	-	LC
<i>Puma concolor</i>	Cougar	Carnivorous	2	0.71	-	VU	VU	LC
Family Procyonidae								
<i>Nasua nasua</i>	South American Coati	Omnivorous	6	2.14	-	-	-	LC
Order Cetartiodactyla								
Family Tayassuidae								
<i>Pecari tajacu</i>	Collared Pecari	Omnivorous	8	2.85	0.08	VU	-	LC
Order Rodentia								
Family Cuniculidae								
<i>Cuniculus paca</i>	Spotted Paca	Herbivorous	22	7.85	0.62	VU	-	LC

Table 1: Continued on next page...

Table 1: ...Continued

Species	Common Name	Trophic guild	Number of records	Relative frequency (%)	Poaching intensity	Threat level		
						RJ	BR	World
Family Dasyproctidae								
<i>Dasyprocta leporina</i>	Brazilian Agouti	Herbivorous	90	32.14	0.46	-	-	LC
Order Lagomorpha								
Family Leporidae								
<i>Sylvilagus brasiliensis</i>	Forest Rabbit	Herbivorous	3	1.07	-	-	-	LC

(*) Small mammals and exotic species recorded in the study area

Rio de Janeiro Atlantic Forest Mosaic (Alves & Andriolo 2005, Carvalho *et al.* 2014, Aximoff *et al.* 2015, Travassos *et al.* 2018) and vicinities (Modesto *et al.* 2008, Bastos-Neto *et al.* 2009, Aximoff *et al.* 2015). In this way, Paraíso Unit helps to maintain the populations of these species in the region. This is even more important for the four endangered species (Rio de Janeiro Red List, Bergallo *et al.* 2000) recorded in the area: *Puma concolor*, *Leopardus pardalis*, *Pecari tajacu*, and *Cuniculus paca*.

Other studies (N = 4) in Central Rio de Janeiro Atlantic Forest Mosaic and vicinities recorded a higher number of species in camera traps than the present study (Table 3). The differences may be related to sampling issues, such as a lower sampling effort or the location where the camera traps were installed. Many medium and large mammals, like *L. pardalis* and *P. concolor*, commonly use large trails, and are frequently recorded in roads (Weckel *et al.* 2006, Goulart *et al.* 2009, Harmsen *et al.* 2010). However, the study area did not have roads or open trails and we had to sample in natural trails inside the forest. Therefore, the increase in sampling effort, distance between the sampling points and the installation of camera traps on main tracks and dirt roads could together lead to an increase in the number of species detected (Weckel *et al.* 2006, Srbek-Araujo & Chiarello 2007, Goulart *et al.* 2009).

The differences between our study and the other four studies in Central Rio de Janeiro Atlantic Forest Mosaic also could be caused by anthropogenic disturbances, such as poaching and presence of domestic animals. These disturbances could represent a filter leading to lower richness and to the dominance of the generalist species (Lessa *et*

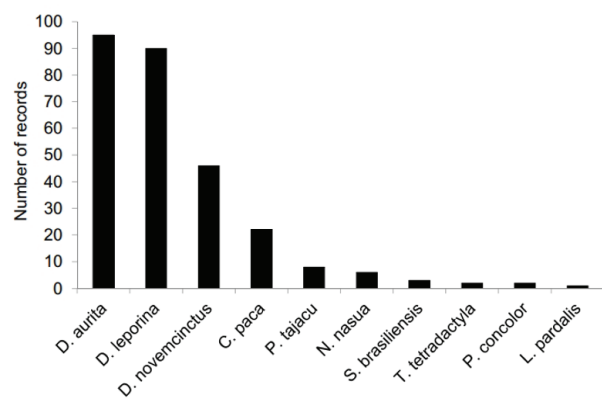


Figure 3. Number of records obtained for each species using the camera trapping method at the Três Picos State Park – Paraíso Unit.

al. 2016, Doherty *et al.* 2017). Dogs were recorded in one sampling point, and during fieldwork, direct observations revealed the presence of several dogs and poachers inside the park. The residents of Paraíso neighborhood own a large number of domestic animals, which wander in the forest.

Dogs and cats may affect the wildlife (Hughes & Macdonald 2013, Gompper 2013, Lessa *et al.* 2016), since they can prey on (Campos *et al.* 2007, Srbek-Araujo & Chiarello 2008, Vanak & Gompper 2009, Ferreira *et al.* 2014) or compete with native species (Atickem *et al.* 2010, Carvalho *et al.* 2019). They can also be disease reservoirs or vectors (Filoni *et al.* 2006, Furtado *et al.* 2013, Lessa *et al.* 2016). The spatial overlap between domestic and wild mammals represent a risk for endangered species (e.g. Lessa & Bergallo, 2012, Hughes & Macdonald, 2013, Lessa *et al.* 2016, Doherty *et al.* 2017, Ferreira & Genaro 2017, Ferreira *et al.* 2014, 2018). A review based on the IUCN Red List database pointed

Table 2. Opinion of the residents of Paraíso neighborhood about the establishment of the Três Picos State Park – Paraíso Unit.

Questions	Interviewees (N = 22)	
	Totally agree / Partially agree	Partially disagree / Totally disagree
Degree of satisfaction with Paraíso Unit	6.8 / 10	
There are dialogue between park administration and the neighbor human population	13.6%	86,3%
The park is receptive to community leisure activities.	31.8%	68.2%
The establishment of the Paraíso Unit has harmed you somehow.	22.7%	77.3%

out that the domestic dog has contributed to the extinction of 11 vertebrate species and poses a threat to 188 others threaten species (Doherty *et al.* 2017). Another threat to the wildlife is zoonoses (Primack & Rodrigues 2001). Many zoonoses – like rabies, canine distemper virus, toxoplasmosis, cutaneous larval migrans and plague – can be transmitted from domestic animals to wildlife (*e.g.* Schloegel *et al.* 2005; Gerhold & Jessup 2013, Medina *et al.* 2014).

Poaching is an important driver of mammal assemblages (Cullen Jr. *et al.* 2001, Naughton-Treves *et al.* 2003, Laurance *et al.* 2006). According to the local residents, there is still poaching inside the Paraíso Unit. The location of the Paraíso Unit near Rio de Janeiro city favors poaching. The study area is located approximately 120 kilometers from Rio de Janeiro city and the Paraíso neighborhood is a common tourist location, leading to the movement of a large number of people and vehicles in the area. According to the local citizens, *C. paca*, *D. novemcinctus*, and *D. leporina* are the most poached species in the Paraíso. Poaching of these species is common in other areas of the Atlantic Forest (*e.g.* Pianca 2004, Hanazaki *et al.* 2009, Dantas-Aguiar *et al.* 2011, Sousa & Srbek-Araujo 2017). Although in some cases local citizens suspend pouching during reproductive periods (*e.g.* Hanazaki *et al.* 2009), poaching has been linked to the extinction of these species in different areas of their distribution (*e.g.* Canale *et al.* 2012, Cid *et al.* 2014, Galetti *et al.* 2016a).

The Paraíso Unit, together with the other units of the Três Picos State Park, form the state's largest conservation unit in the Central Rio de Janeiro Atlantic Forest Mosaic. Thus, this is an extremely

important region for the conservation of the fauna of the state. However, the lack of dialogue between the park administration and the residents can jeopardize the efficiency of wildlife conservation. Most of the residents claimed that they would want to be part of the conservation projects in the park. The development of a governance system based on multiple stakeholders and rights holders with different views and interests is a worldwide challenge (Zafra-Calvo *et al.* 2019). In face of our results, we recommend the following management actions: (I) improve the protected area governance, implementing its management plan in a participatory, inclusive and equity way; (II) development of an environmental education program to increase awareness about local fauna and the importance of the park and its activities; (III) inform people about diseases transmitted by free-ranging dogs and cats; (IV) spay/neuter and vaccination campaigns of domestic animals as a way to control the population growth and diseases dissemination; (V) surveillance and monitoring program to reduce free-ranging animals and poaching inside the park. We believe that the implementation of these measures could improve the effectiveness of the main function of this and other protected areas.

ACKNOWLEDGEMENTS

We would like to thank A. C. S. Pereira, I. Duarte, L. Burity, L. Aguiar, M. Tavares, M. L. Rheingantz and B. Araújo for their logistical support during the field work. A.V. de Araujo, F. S. Pessôa, M. L. Rheingantz and G. S. Pereira for the suggestions concerning the writing. L. Macedo for his assistance

Table 3. Camera trap records of medium and large sized mammals obtained in the present study and from other protected areas.

Species	Três Picos State Park - Paraíso Unit	Guapiaçú Ecological Reserve	Serra dos Orgãos National Park	Araras Biological Reserve	Farm Forest	Desengano State Park	Itatiaia National Park	Serra da Bocaina National Park	Serra do Mar State Park - Caraguatatuba unit
Reference	This Study	Carvalho <i>et al.</i> 2014	Aximoff <i>et al.</i> 2015	Alves & Andriolo 2005	Bastos-Neto <i>et al.</i> 2009	Modesto <i>et al.</i> 2008	Aximoff <i>et al.</i> 2015	Delciellos <i>et al.</i> 2012	Norris <i>et al.</i> 2012
Species richness	10	13	14	5	10	1	21	4	10
Sampling effort (camera-days)	1754	1598	9197	221	NA	120	3885	78	223.2
Distance to PETP	-	15 km	28.2 km	35.8 km	90 km	118 km	177 km	186.6 km	285.6 km
Order									
Didelphimorphia									
Family Didelphidae									
<i>Didelphis aurita</i>	X	X	X	X	X		X		X
Order Pilosa									
Family									
Myrmecophagidae									
<i>Tamandua tetradactyla</i>	X	X	X		X		X	X	
Family									
Bradyrodidae									
<i>Bradyrodus torquatus</i>									
<i>Bradyrodus variegatus</i>									
Order Cingulata									
Family									
Dasyproctidae									
<i>Dasyproctes novemcinctus</i>	X	X	X		X		X	X	X

Table 3: Continued on next page...

Table 3: ...Continued

Species	Três Picos State Park - Paraíso Unit	Guapiaçu Ecological Reserve	Serra dos Orgãos National Park	Araras Biological Reserve	Farm Forest	Desengano State Park	Itatiaia National Park	Serra da Bocaina National Park	Serra do Mar State Park - Caraguatatuba unit	Serra do Mar State Park - Santa Virgínia unit
<i>Dasyus septemcinctus</i>							X			
<i>Cabassou tatouay</i>		X	X				X			
<i>Euphractus sexcinctus</i>		X					X			
<i>Dasyus sp.</i>				X						
Order Carnivora										
Family Felidae										
<i>Leopardus pardalis</i>	X	X			X		X		X	
<i>Leopardus wiedii</i>			X				X			X
<i>Leopardus guttulus</i>			X				X			X
<i>Leopardus tigrinus</i>									X	X
<i>Puma concolor</i>	X	X	X		X		X		X	X
<i>Puma yagouaroundi</i>			X				X			X
Family Mustelidae										
<i>Eira barbara</i>		X	X	X			X		X	
<i>Lontra longicaudis</i>					X					
Family Procyonidae										
<i>Nasua nasua</i>	X	X	X	X	X		X	X		
<i>Procyon cancrivorus</i>					X					X
<i>Potos flavus</i>							X			

Table 3: Continued on next page...

Table 3: ...Continued

Species	Três Picos State Park - Paraíso Unit	Guapiaçú Ecological Reserve	Serra dos Orgãos National Park	Araras Biological Reserve	Farm Forest	Desengano State Park	Itatiaia National Park	Serra da Bocaina National Park	Serra do Mar State Park - Caraguatatuba unit	Serra do Mar State Park - Virginia unit
Family Canidae										
<i>Cerdocyon thous</i>	X	X	X				X			X
<i>Chrysocyon brachyurus</i>							X			
Order Cetartiodactyla										
Family Cervidae										
<i>Mazama americana</i>							X			
Order Perissodactyla										
Family Tapiridae										
<i>Tapirus terrestris</i>									X	
Family Tayassuidae										
<i>Pecari tajacu</i>	X	X	X						X	X
<i>Tayassu pecari</i>										X
Order Rodentia										
Family Cuniculidae										
<i>Cuniculus paca</i>	X	X	X	X	X	X	X	X	X	X
Family Dasyproctidae										
<i>Dasyprocta leporina</i>	X	X								
<i>Dasyprocta iacki</i>									X	
<i>Dasyprocta azarae</i>										X

Table 3: Continued on next page...

Table 3: ...Continued

Species	Três Picos State Park - Paraíso Unit	Guapiaçu Ecological Reserve	Serra dos Orgãos National Park	Araras Biological Reserve	Farm Forest	Desengano State Park	Itatiaia National Park	Serra da Bocaina National Park	Serra do Mar State Park - Santa Virgínia unit	Serra do Mar State Park - Caraguatatuba unit
Family Caviidae										
<i>Hydrochoerus hydrochaeris</i>			X				X			X
Order Lagomorpha										
Family Leporidae										
<i>Sylvilagus brasiliensis</i>	X						X			

in the identification of the recorded species. This study was part of the Projeto Refauna, and it was supported by Fundação de Auxílio à Pesquisa do Estado do Rio de Janeiro and by Instituto Federal do Rio de Janeiro. RPCA was supported by a FAPERJ fellowship and ALAMR was supported by a CNPq fellowship.

REFERENCES

- Alves, L. C. P. S., & Andriolo, A. 2005. Camera traps used on the mastofaunal survey of Araras Biological Reserve, IEF-RJ. *Revista Brasileira de Zoociências*, 7(2), 231–246.
- Atickem, A., Bekele, A., & Williams, S. D. 2010. Competition between domestic dogs and Ethiopian wolf (*Canis simensis*) in the Bale Mountains National Park, Ethiopia. *African Journal of Ecology* 48(2), 401–407. DOI: <https://doi.org/10.1111/j.1365-2028.2009.01126.x>
- Aximoff, I., Spencer, C., & Vaz, S. M. 2015. Mamíferos de médio e grande porte no Parque Nacional do Itatiaia. *Oecologia australis*, 19(1), 215–231. DOI: <https://doi.org/10.4257/oeco.2015.1901.14>
- Bastos-Neto, O. J., de Oliveira, E. G. R., de Souza, D. P., Mello, B. F., Amorim, T. O. S., Gomes, K. C. P., & Andriolo, A. 2009. Mamíferos de um fragmento florestal particular periurbano de Juiz de Fora, Minas Gerais, Brasil. *Revista Brasileira de Zoociências*, 11(3), 269–276.
- Bergallo, H. G., Rocha, C. F. D., Alves, M. A. S., & Van Sluys, M., (Eds.). 2000. A fauna ameaçada de extinção do Estado do Rio de Janeiro. Rio de Janeiro: EDUERJ: p. 166.
- Bodmer, R. E., Eisenberg, J. F., & Redford, K. H. 1997. Hunting and the Likelihood of Extinction of Amazonian Mammals. *Conservation Biology*, 11(2), 460–466. DOI: <https://doi.org/10.1046/j.1523-1739.1997.96022.x>
- Campos, C. B., Esteves, C.F., Ferraz, K. M. P. M. B., Crawshaw Jr, P. G., & Verdade, L. M. 2007. Diet of free-ranging cats and dogs in a suburban and rural environment, south-eastern Brazil. *Journal of Zoology*, 273(1), 14–20. DOI:10.1111/j.1469-7998.2007.00291.x
- Canale, G. R., Peres, C. A., Guidorizzi, C. E., Gatto, C. A. F., & Kierulff, M. C. M. 2012. Pervasive defaunation of forest remnants in a tropical biodiversity hotspot. *PloS one*, 7(8), e41671. DOI: <https://doi.org/10.1371/journal.pone.0041671>

- Carrillo, E., Wong, G., & Cuarón, A. D. 2000. Monitoring mammal populations in Costa Rican protected areas under different hunting restrictions. *Conservation biology*, 14(6), 1580–1591. DOI: <https://doi.org/10.1111/j.1523-1739.2000.99103.x>
- Carvalho, I. D., De Oliveira, R., & Dos Santos Pires, A. 2014. Medium and large-sized mammals of the Reserva Ecológica de Guapiaçú, Cachoeiras de Macacu, RJ. 2014. *Bioneotropica* 14(3), 1–9. DOI: <http://dx.doi.org/10.1590/1676-06032014007414>
- Carvalho, W. D., Rosalino, L. M., Godoy, M. S. A. M., Giorgete, M. F., Adania, C. H., & Esbérard, C. E. L. 2019. Temporal activity of rural free-ranging dogs: implications for the predator and prey species in the Brazilian Atlantic Forest. *NeoBiota*, 45, 55–74. DOI: <https://doi.org/10.3897/neobiota.45.30645>
- Cerqueira, R., Garay, I., & Dias, B. 2001. Um sistema de monitoramento e inventário da biodiversidade terrestre do Brasil. In: I. Garay & B.F.S. Dias (Eds.), *Conservação e biodiversidade em ecossistemas tropicais: avanços conceituais e revisão de novas metodologias de avaliação e monitoramento*. pp. 147–149. Petrópolis: Vozes.
- Chape, S., Harrison, J., Spalding, M., & Lysenko, I. 2005. Measuring the extent and effectiveness of protected areas as an indicator for meeting global biodiversity targets. *Philosophical Transactions of the Royal Society B: Biological Sciences*, 360(1454), 443–455. DOI: <https://doi.org/10.1098/rstb.2004.1592>
- Cid, B., Figueira, L., de T. e Mello, A. F., Pires, A. S., & Fernandez, F. A. 2014. Short-term success in the reintroduction of the red-humped agouti *Dasyprocta leporina*, an important seed disperser, in a Brazilian Atlantic Forest reserve. *Tropical Conservation Science*, 7(4), 796–810. DOI: <https://doi.org/10.1177/194008291400700415>
- Convention on Biological Diversity (CBD). 2010. Aichi Target 11 - Technical Rationale Extended, COP/10/INF/12/Rev.1. Retrieved from: <https://www.cbd.int/sp/targets/rationale/target-11/>
- Cullen Jr, L., Bodmer, R. E., & Valladares-Pádua, C. 2000. Effects of hunting in habitat fragments of the Atlantic forests, Brazil. *Biological conservation*, 95(1), 49–56. DOI: [https://doi.org/10.1016/S0006-3207\(00\)00011-2](https://doi.org/10.1016/S0006-3207(00)00011-2)
- Cullen Jr, L., Bodmer, R. E., & Valladares-Pádua, C. 2001. Ecological consequences of hunting in Atlantic forest patches, São Paulo, Brazil. *Oryx*, 35(2), 137–144. DOI: <https://doi.org/10.1046/j.1365-3008.2001.00163.x>
- Dantas-Aguiar, P. R., Barreto, R. M., Santos-Fita, D., & Santos, E. B. 2011. Hunting activities and wild fauna use: a profile of queixo d’antas community, campo formoso, Bahia, Brazil. *Bioremediation, Biodiversity and Bioavailability*, 5(1), 34–43.
- Delciellos, A., Detogne, N., Novaes, R., Vieira, N., Loguercio, M., Bergallo, H., Geise, L., Raíces, D., Santori, R., Felix, S., Souza, R., da Silva, C., Papi, B., & Rocha-Barbosa, O. 2012. Mammals of Serra da Bocaina National Park, state of Rio de Janeiro, southeastern Brazil. *Check List*, 8(4), 675–692. DOI: <https://doi.org/10.15560/8.4.675>
- Doherty, T. S., Dickman, C. R., Glen, A. S., Newsome, T. M., Nimmo, D. G., Ritchie, E. G., Vanak, A. T., & Wirsing, A. J. 2017. The global impacts of domestic dogs on threatened vertebrates. *Biological Conservation*, 210, 56–59. DOI: <https://doi.org/10.1016/j.biocon.2017.04.007>
- Ericsson, G., & Heberlein, T. A. 2003. Attitudes of hunters, locals, and the general public in Sweden now that the wolves are back. *Biological Conservation*, 111(2), 149–159. DOI: [https://doi.org/10.1016/S0006-3207\(02\)00258-6](https://doi.org/10.1016/S0006-3207(02)00258-6)
- Escamilla, A., Sanvicente, M., Sosa, M., & Galindo-Leal, C. 2000. Habitat mosaic, wildlife availability, and hunting in the tropical forest of Calakmul, Mexico. *Conservation Biology*, 14(6), 1592–1601. DOI: <https://doi.org/10.1111/j.1523-1739.2000.99069.x>
- Ferreira, G. A., Nakano-Oliveira, E., Andriolo, A., & Genaro, G. 2018. Spatial overlap between domestic cats and wild felines in an insular Atlantic Forest remnant. *Animal Biology*, 69(2), 1–16. DOI: 10.1163/15707563-17000110.
- Ferreira, G.A., & Genaro, G. 2017. Predation of birds by domestic cats on a Neotropical island. *International Journal of Avian & Wildlife Biology*, 2(2), 60–63. DOI:10.15406/ijawb.2017.02.00017.
- Ferreira, G.A., Nakano-Oliveira, E., & Genaro, G. 2014. Domestic cat predation on Neotropical species in an insular Atlantic Forest remnant in southeastern Brazil. *Wildlife Biology*, 20(3), 167–176. DOI: <https://doi.org/10.2981/wlb.13131>
- Filoni, C., Catão-Dias, J. L., Bay, G., Durigon, E. L., Jorge, R. S. P., Lutz, H., & Hofmann-Lehmann,

- R. 2006. First evidence of feline herpesvirus, calicivirus, parvovirus, and Ehrlichia exposure in Brazilian free-ranging felids. *Journal of Wildlife Diseases*, 42(2), 470–477. DOI: <https://doi.org/10.7589/0090-3558-42.2.470>
- Fischer, J., & Lindenmayer, D. B. 2007. Landscape modification and habitat fragmentation: a synthesis. *Global ecology and biogeography*, 16(3), 265–280. DOI: <https://doi.org/10.1111/j.1466-8238.2007.00287.x>
- Furtado, M. M., de Ramos Filho, J. D., Scheffer, K. C., Coelho, C. J., Cruz, P. S., Ikuta, C. Y., Jácomo, A. T. A., Porfírio, G. E. O., Silveira, L., Sollmann, R., Tôrres, N. M., & Neto, J. S. F. 2013. Serosurvey for selected viral infections in free-ranging jaguars (*Panthera onca*) and domestic carnivores in Brazilian Cerrado, Pantanal, and Amazon. *Journal of Wildlife Diseases*, 49(3), 510–521. DOI: <https://doi.org/10.7589/2012-02-056>
- Galetti, M., Brocardo, C. R., Begotti, R. A., Hortenci, L., Rocha-Mendes, F., Bernardo, C. S. S., Bueno, R. S., Nobre, R., Bovendorp, R. S., Marques, R. M., Meirelles, F., Gobbo, S. K., Beca, G., Schmaedecke, G., & Siqueira, T., 2016a. Defaunation and biomass collapse of mammals in the largest Atlantic forest remnant. *Animal Conservation*, 20(3), 270–281. DOI: <https://doi.org/10.1111/acv.12311>
- Gerhold, R.W., & Jessup, D.A. 2013. Zoonotic diseases associated with free-roaming cats. *Zoonosis and Public Health*, 60(3), 189–195. DOI: <https://doi.org/10.1111/j.1863-2378.2012.01522.x>
- Gompper, M. E. 2013. Free-ranging dogs and wildlife conservation. Oxford: Oxford University Press: p. 336.
- Goulart, F. V. B., Cáceres, M. C., Graipel, M. E., Tortato, M. A., Ghizoni, I. R., & Oliveira-Santos, L. G. R. 2009. Habitat selection by large mammals in a southern Brazilian Atlantic Forest. *Mammalian Biology – Zeitschrift für Säugetierkunde*, 74(3), 182–190. DOI: <https://doi.org/10.1016/j.mambio.2009.02.006>
- Graipel, M. E., Cherem, J. J., Monteiro-Filho, E. L. A., & Carmignotto, A. P. 2017. Mamíferos da Mata Atlântica. In: Monteiro-Filho, E.L.A., & Conte, C.E. (Org.), *Revisões em Zoologia: Mata Atlântica*. pp. 391–482. Curitiba: EdUFPR.
- Hanazaki, N., Alves, R. R., & Begossi, A. 2009. Hunting and use of terrestrial fauna used by Caiçaras from the Atlantic Forest coast (Brazil). *Journal of Ethnobiology and Ethnomedicine*, 5(1), 36. DOI: <https://doi.org/10.1186/1746-4269-5-36>
- Harmsen, B. J., Foster, R. J., Silver, S., Ostro, L., & Doncaster, C. P. 2010. Differential use of trails by forest mammals and the implications for camera trap studies: a case study from Belize. *Biotropica*, 42(1), 126–133. DOI: <https://doi.org/10.1111/j.1744-7429.2009.00544.x>
- Hughes, J., & Macdonald, D. W. 2013. A review of the interactions between free-roaming domestic dogs and wildlife. *Biological Conservation*, 157, 341–351. DOI: <https://doi.org/10.1016/j.biocon.2012.07.005>
- Instituto Chico Mendes de Conservação da Biodiversidade (ICMBio). 2018. Livro Vermelho da Fauna Brasileira Ameaçada de Extinção (Volume II): Mamíferos. Brasília: Editora ICMBio/MMA: p. 625
- INEA. 2013. Plano de Manejo do Parque Estadual dos Três Picos: Resumo Executivo. Rio de Janeiro: Instituto Estadual do Ambiente (INEA): p. 100.
- IUCN. 2019. The IUCN Red List of Threatened Species. Version 2019-2. Retrieved on November 6th, 2019, from <http://www.iucnredlist.org>.
- Jonker, S. A., Muth, R. M., Organ, J. F., Zwick, R. R., & Siemer, W. F. 2006. Experiences with beaver damage and attitudes of Massachusetts residents toward beaver. *Wildlife Society Bulletin*, 34(4), 1009–1021. DOI: [https://doi.org/10.2193/0091-7648\(2006\)34\[1009:EWBDAA\]2.0.CO;2](https://doi.org/10.2193/0091-7648(2006)34[1009:EWBDAA]2.0.CO;2)
- Kindt, R., & Coe, R. 2005. Tree diversity analysis: a manual and software for common statistical methods for ecological and biodiversity studies. Nairobi, Kenya: World Agroforestry Centre: p. 207.
- Kurtz, B. C., & de Araújo, D. S. D. 2000. Composição florística e estrutura do componente arbóreo de um trecho de Mata Atlântica na Estação Ecológica Estadual do Paraíso, Cachoeiras de Macacu, Rio de Janeiro, Brasil. *Rodriguésia*, 51(78/79), 69–111. <http://www.jstor.org/stable/23497546>
- Laurance, W. F., Croes, B. M., Tchignoumba, L., Lahm, S. A., Alonso, A., Lee, M. E., Campbell, P., & Ondzeano, C. 2006. Impacts of Roads

- and Hunting on Central African Rainforest Mammals. *Conservation Biology*, 20, 1251–1261. DOI: <https://doi.org/10.1111/j.1523-1739.2006.00420.x>
- Lessa, I. C. M., & Bergallo, H. G. 2012. Modelling the population control of the domestic cat: an example from an island in Brazil. *Brazilian Journal of Biology*, 72(3), 445–452. DOI: <http://dx.doi.org/10.1590/S1519-69842012000300005>
- Lessa, I., Guimarães, T. C. S., Bergallo, H. G., Cunha, A., & Vieira, E. M. 2016. Domestic dogs in protected areas: a threat to Brazilian mammals?. *Natureza & Conservação*, 14(2), 46–56. DOI: <https://doi.org/10.1016/j.ncon.2016.05.001>
- Lindenmayer, D. B., & Noss, R. F. 2006. Salvage logging, ecosystem processes, and biodiversity conservation. *Conservation Biology*, 20(4), 949–958. DOI: <https://doi.org/10.1111/j.1523-1739.2006.00497.x>
- Magurran, A. E. 2004. *Measuring biological diversity*. Oxford: Blackwell Publishing: p. 264.
- Medina, F.M., Bonnaud, E., Vidal, E., & Nogales, M. 2014. Underlying impacts of invasive cats on islands: not only a question of predation. *Biodiversity and Conservation*, 23(2), 327–342. DOI: <https://doi.org/10.1007/s10531-013-0603-4>
- Mittermeier R. A., Turner W. R., Larsen F. W., Brooks T. M., & Gascon, C. 2011. In: *Global Biodiversity Conservation: The Critical Role of Hotspots*. In: Zachos F, Habel J. (Eds.) *Biodiversity Hotspots*. pp. 3–22. Berlin, Heidelberg: Springer. DOI: https://doi.org/10.1007/978-3-642-20992-5_1
- Modesto, T. C., Pessôa, F. S., Enrici, M. C., Attias, N., Jordão-Nogueira, T., Costa, L. M., Albuquerque, H. G., & Bergallo, H. G. 2008. Mamíferos do Parque Estadual do Desengano, Rio de Janeiro, Brasil. *Biota Neotropica*, 8(4). DOI: <https://dx.doi.org/10.1590/S1676-06032008000400015>
- Muyllaert, R. L., Vancine, M. H., Bernardo, R., Oshima, J. E. F., Sobral-Souza, T., Tonetti, V. R., Niebuhr, B. B., & Ribeiro, M. C. 2018. Uma nota sobre os limites territoriais da Mata Atlântica. *Oecologia Australis*, 22(3), 302–311. DOI: <https://doi.org/10.4257/oeco.2018.2203.09>
- Myers, N., Mittermeier, R. A., Mittermeier, C. G., Da Fonseca, G. A., & Kent, J. 2000. Biodiversity hotspots for conservation priorities. *Nature*, 403(6772), 853–858. DOI: <https://doi.org/10.1038/35002501>
- Naughton-Treves, L., Mena, J. L., Treves, A., Alvarez, N., & Radeloff, V. C. 2003. Wildlife Survival Beyond Park Boundaries: The Impact of Slash-and-Burn Agriculture and Hunting on Mammals in Tambopata, Peru. *Conservation Biology*, 17(4), 1106–1117. DOI: <https://doi.org/10.1046/j.1523-1739.2003.02045.x>
- Norris, D., Ramírez, J. M., Zacchi, C., & Galetti, M. 2012. A survey of mid and large bodied mammals in Núcleo Caraguatatuba, Serra do Mar State Park, Brazil. *Biota Neotropica*, 12(2), 127–133. DOI: <http://dx.doi.org/10.1590/S1676-06032012000200013>
- Oksanen, J., Blanchet, F. G., Friendly, M., Kindt, R., Legendre, P., McGlenn, D., Minchin, P. R., O’Hara, R. B., Simpson, G. L., Solymos, P., Stevens, M. H. H., Szoecs, E., & Wagner, H. 2019. *vegan: Community Ecology Package*. R package version 2.5-6. <https://CRAN.R-project.org/package=vegan>
- Paschoal, A. M. O., Massara, R. L., Santos, J. L., & Chiarello, A. G. 2012. Is the domestic dog becoming an abundant species in the Atlantic forest? A study case in southeastern Brazil. *Mammalia*, 76(1), 67–76. DOI: <https://doi.org/10.1515/mammalia-2012-0501>
- Paglia, A. P., Fonseca, G. A. B., Rylands, A. B., Herrmann, G., Aguiar, L. M. S., Chiarello, A. G., Leite, Y. L. R., Costa, L. P., Siciliano, S., Kierulff, M. C. M., Mendes, S. L., Tavares, V. C., Mittermeier, R. A., & Patton, J. L. 2012. *Annotated Checklist of Brazilian Mammals*. 2nd ed. *Occasional Papers in Conservation Biology*, No. 6. Arlington, VA: Conservation International: p. 76.
- Pianca, C. C. 2004. *A caça e seus efeitos sobre a ocorrência de mamíferos de médio e grande porte em áreas preservadas de Mata Atlântica na Serra de Paranapiacaba (SP)*. Master Thesis. Escola Superior de Agricultura de Luiz de Queiroz, Universidade de São Paulo. p. 90.
- Primack, R. B., & Rodrigues, E. 2001. *Biologia da conservação*. Londrina: Editora Planta: p. 328.
- Redford, K. H. 1992. The empty forest. *BioScience*, 42(6), 412–422. DOI: [10.2307/1311860](https://doi.org/10.2307/1311860).
- Rezende, C. L., Scarano, F. R., Assad, F. R., Joly, C. A., Metzger, J. P., Strassburg, B. B. N., Tabarelli, M., Fonseca, G. A., & Mittermeier, R. A., 2018. From hotspot to hopespot: an opportunity for

- the Brazilian Atlantic Forest. *Perspectives in Ecology and Conservation*, 16(4), 208–214. DOI: <https://doi.org/10.1016/j.pecon.2018.10.002>
- Rocha-Mendes, F., Neves, C. L., Nobre, R. D. A., Marques, R. M., Bianconi, G. V., & Galetti, M. 2015. Non-volant mammals from Núcleo Santa Virgínia, Serra do Mar State Park, São Paulo, Brazil. *Biota Neotropica*, 15(1), e20140008. DOI: <http://dx.doi.org/10.1590/1676-06032014000814>
- R Development Core Team. 2018. R: a language and environment for statistical computing. R Foundation for Statistical Computing, Vienna, Austria. <http://www.R-project.org>.
- Rodrigues, A. S., Andelman, S. J., Bakarr, M. I., Boitani, L., Brooks, T. M., Cowling, R. M., Fishpool, L. D. C., da Fonseca, G. A. B., Gaston, K. J., Hoffmann, M., Long, J. S., Marquet, P. A., Pilgrim, J. D., Pressey, R. L., Schipper, J., Sechrest, W., Stuart, S. N., Underhill, L. G., Waller, R. W., Watts, M. E. J., & Yan, X. 2004. Effectiveness of the global protected area network in representing species diversity. *Nature*, 428(6983), 640–643. DOI: <https://doi.org/10.1038/nature02422>
- Schloegel, L. M., Daszak, P., & Nava, A. 2005. Conservation Medicine: tackling the root causes of emerging infectious diseases and seeking practical solutions. *Natureza & Conservação*, 3(2), 135–146.
- Sousa, J. A. C., & Srbek-Araujo, A. C. 2017. Are we headed towards the defaunation of the last large Atlantic Forest remnants? Poaching activities in one of the largest remnants of the Tabuleiro forests in southeastern Brazil. *Environmental monitoring and assessment*, 189(3), 197–206. DOI: <https://doi.org/10.1007/s10661-017-5854-1>
- Srbek-Araujo, A. C., & Chiarello, A. G. 2007. Use of camera traps in mammal sampling: methodological considerations and comparison of equipments. *Revista Brasileira de Zoologia* 24(3), 647–656. DOI: <http://dx.doi.org/10.1590/S0101-81752007000300016>
- Srbek-Araujo, A.C., & Chiarello, A.G. 2008. Domestic dogs in Atlantic forest preserves of south-eastern Brazil: a camera-trapping study on patterns of entrance and site occupancy rates. *Brazilian Journal of Biology*, 68(4), 771–779. DOI: <http://dx.doi.org/10.1590/S1519-69842008000400011>
- Travassos, L., Carvalho, I. D., Pires, A. S., Gonçalves, S. N., Oliveira, P.M., Saraiva, A., & Fernandez, F.A. 2018. Living and lost mammals of Rio de Janeiro's largest biological reserve: an updated species list of Tinguá. *Biota Neotropica*, 18(2), e20170453. DOI: <http://dx.doi.org/10.1590/1676-0611-bn-2017-0453>
- Vanak, A. T., & Gompper, M. E. 2009. Dogs *Canis familiaris* as carnivores: their role and function in intraguild competition. *Mammal Review*, 39(4), 265–283. DOI: <https://doi.org/10.1111/j.1365-2907.2009.00148.x>
- Weckel, M., Giuliano, W., & Silver, S. 2006. Jaguar (*Panthera onca*) feeding ecology: distribution of predator and prey through time and space. *Journal of zoology*, 270(1), 25–30. DOI: [10.1111/j.1469-7998.2006.00106.x](https://doi.org/10.1111/j.1469-7998.2006.00106.x)
- Wickham, H. 2016. *ggplot2: Elegant Graphics for Data Analysis*. New York: Springer-Verlag. New York: p. 213
- Wickham, H., Hester, J. & Chang, W. 2019. *devtools: Tools to Make Developing R Packages Easier*. R package version 2.2.1. <https://CRAN.R-project.org/package=devtools>
- Zafra-Calvo, N., Garmendia, E., Pascual, U., Palomo, I., Gross-Camp, N., Brockington, D., Cortes-Vazquez, J. A., Coolsaet, B., & Burgess, N.D. 2019. Progress toward Equitably Managed Protected Areas in Aichi Target 11: A Global Survey. *BioScience*, 69(3), 191–197. DOI: <https://doi.org/10.1093/biosci/biy143>

Submitted: 9 January 2019

Accepted: 9 December 2019

Published on line: 19 December 2019

Associate Editor: William Carvalho