

Bochdalek's flower basket

Cesta de flores de Bochdalek

Eliasz Engelhardt¹, Denise Madeira Moreira²

Vincenz Alexander Bochdalek (1801-1883) was a Bohemian (region of the Czech Republic or the former Kingdom of Bohemia) anatomist and pathologist. He described the choroid plexus of the 4th ventricle, and there, for the first time, the horizontal limbs of this plexus within the lateral recesses of the 4th ventricle, protruding through the lateral aperture (Luschka's foramen) on each side, and ending in bulbous expansions called cornucopiae, which lay within the lateral cerebellomedullary cisterns. These expansions were named 'flower basket' (*Blumenkörbchen*) by the author, later named after him as 'Bochdalek's flower basket'^{1,2}.

er basket'^{1,2}.

Physiological calcifications of the choroid plexus may occur in 38% of cases aged over 51 years, visualized with computed tomography (CT) of the brain (Figure [A]). With magnetic resonance (MR) imaging the calcifications are not seen. However the plexus are identified as extended isointense to the cerebellar parenchima structures in all acquisitions (Figure [B]). They may be misidentified with atheromatous vertebral arteries on CT and, on MR, with some kind of tumor-like formation (cranial nerve, papilloma, aneurysm)³.

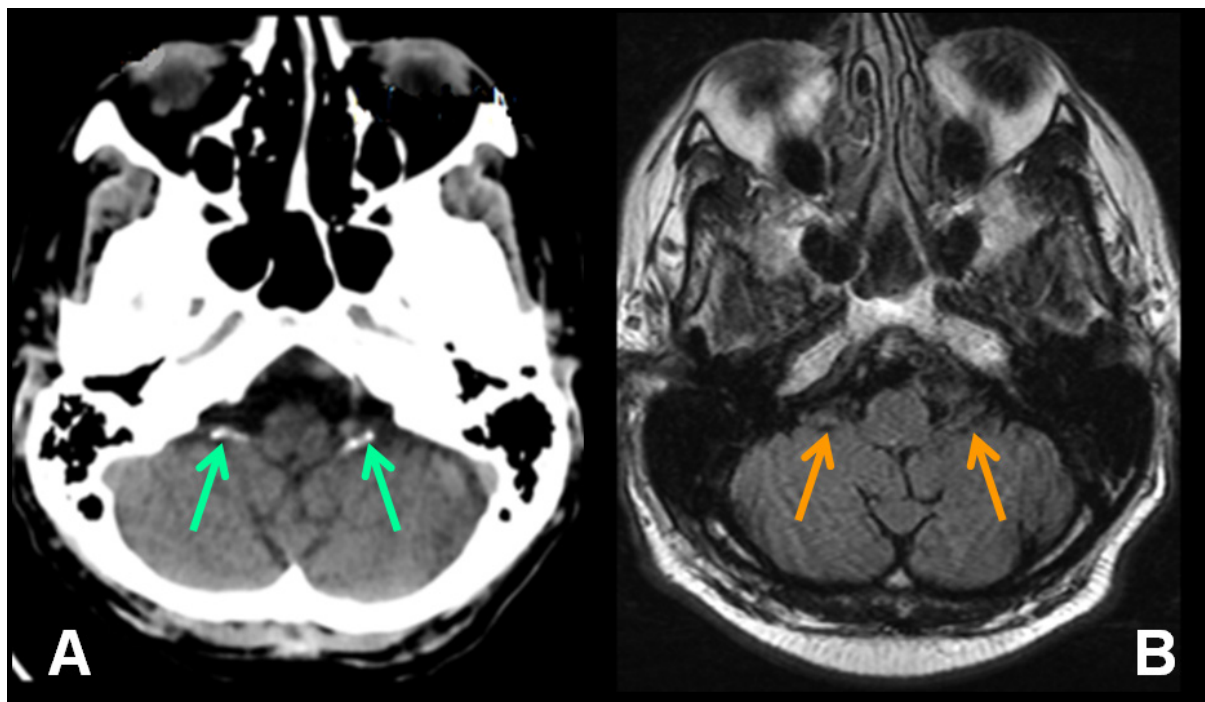


FIGURE 1 Display of the 'Bochdalek's flower basket' on each side. [A] Computed tomography (axial section – without contrast): green arrows point to the calcified flower baskets. [B] Magnetic resonance (axial section – T1 acquisition – without contrast): orange arrows point to the isointense to the cerebellum flower baskets.

REFERENCES

1. Chvátal A, Kachlík D. Vincenc Alexandr Bohdálék (1801–1883): Czech anatomist and neuroscientist of the nineteenth century. *J Hist Neurosci* 2017;26(2):125-139.
2. Engelhardt E. Magendie and Luschka: Holes in the 4th ventricle. *Dement Neuropsychol* 2016;10(3):254-258.
3. Horsburgh A, Kirolos RW, Massoud TF. Bochdalek's flower basket: applied neuroimaging morphometry and variants of choroid plexus in the cerebellopontine angles. *Neuroradiology* 2012;54(12):1341-1346.

¹Cognitive and Behavioral Neurology Unit – Instituto de Neurologia Deolindo Couto /CDA-IPUB-Universidade Federal do Rio de Janeiro.

²Radiology Unit – Instituto de Neurologia Deolindo Couto, Universidade Federal do Rio de Janeiro.

Endereço para correspondência: eliasz@centroin.net.br